

Licking Memorial Health Systems 2014 ANNUAL REPORT



Protecting Young Lives

A Message from the President ...



Robert A. Montagnese
President & CEO

Table of Contents

Protecting Young Lives.....	3-4
Awards.....	5-6
Patient Experience.....	7-8
Boards of Directors.....	9-10
LMHS Senior Management.....	11
LMH Medical Staff Executive Committee...	12
LMH Medical Staff Appointments.....	12
Changes, Enhancements and Technology.....	13-14
Community Events.....	15-16
Community Outreach.....	17-21
Development Council.....	22
Fundraising.....	23-24
Employment.....	25-26
TWIGS & Volunteers.....	27
Facts at a Glance.....	28
Donors.....	29-34

The accomplishments of 2014 demonstrate once again that Licking Memorial Health Systems (LMHS) provides outstanding care to the community – not only in comparison to other community hospitals and health systems in the U.S., but also when compared to the nation’s large, well-known health systems. As services and programs at LMHS expanded over the past year, more patients than ever turned to our Health Systems for care.

In 2014, Licking Memorial Hospital (LMH) saw another year of increased volumes in all service lines. Some of the largest increases occurred in the Emergency Department, the two Urgent Care facilities in Pataskala and Granville, the number of inpatients receiving surgery, and the number of babies delivered in the Maternal Child Department.

Even as our Health Systems adjusts to meet increased needs and provide new services, the dedicated physicians and staff consistently perform at their highest level with tremendous support from Board Members and other volunteers. The quality of their efforts is recognized through prestigious awards that LMHS received throughout the year. The most notable is LMH’s inclusion on Truven Health Analytics’ national list of 100 Top Hospitals for the 12th year. Only a few hospitals in the entire U.S. have received this recognition more times. (A complete list of LMHS’ 2014 awards appears on pages 5 and 6 of this Annual Report.)

LMHS kicked off new initiatives in 2014 to address Ohio’s infant mortality rate which is higher than the national average. Along with programs that focus specifically on health issues for children and teens, our Health Systems is making a concentrated effort to invest in the future of our community’s health while maintaining the highest level of care for all local residents.

Each year, LMHS makes a major contribution to the community through charity care, unpaid cost of Medicaid, and other community health services and contributions. This past year, LMHS also added a \$600,000 upgrade to Licking County’s 12-lead EKG systems in the emergency medical squads.

LMHS’ services and programs are outlined in the following pages of this Annual Report. Our Health Systems’ wide-ranging activities are the result of many dedicated individuals who strive on a daily basis to provide excellent care for our community.

Robert A. Montagnese
President & CEO



Mission: *Licking Memorial Health Systems Exists to Improve the Health of the Community.*

LMHS Dedicated to Protecting Young Lives

Licking Memorial Health Systems (LMHS) has intensified its focus on the community's youngest residents, recognizing that healthy practices which are established in infancy and childhood set the stage for a lifetime of better health. LMHS has expanded its services and programs well beyond state requirements in order to have a greater impact on our community's health.

Reducing Infant Mortality

Coordinated efforts began in 2014 to improve Ohio's infant mortality rates which measure the number of deaths before babies' first birthdays. Ohio's infant mortality rate of 7.57 deaths per 1,000 live births exceeds the national rate of 6.14 deaths per 1,000 live births. The Health Systems joined the Ohio Department of Health's Ohio Collaborative to Prevent Infant Mortality with an action plan that includes expanded programs and services, an advertising campaign to increase prenatal education, breastfeeding education, and additional staff training. LMH also joined the Ohio Hospital Association (OHA) in 2014 in its effort to reduce Ohio's infant mortality rates by 5 percent each year. The OHA initiatives include:

- Safe sleep practices to place infants alone, on their backs, in a crib
- Eliminating elective deliveries before 39 weeks' gestation (LMH has adopted the American Congress of Obstetricians and Gynecologists' stricter recommendation to eliminate elective deliveries before 41 weeks' gestation.)
- Offering progesterone for mothers at high risk of pre-term labor
- Eliminating health disparity between races
- Safe spacing to allow at least 18 months between children
- Access to prenatal care
- Promoting exclusive breastfeeding for at least the first six months

New Maternity Services Added

More new mothers are choosing to deliver their babies at LMH – 1,137 babies were born at the Hospital in 2014, which is a 10.5 percent increase over 2013. Meanwhile, new LMH Maternity services in 2014 included:

- 3D ultrasound imaging that create photograph-like images of unborn babies which improve the physician's ability to detect potential complications for possible treatment in the womb
- Quit for You, Quit for Your Baby – a free, incentivized tobacco cessation program for expectant mothers
- The first annual Baby Expo, sponsored by the LMH Development Council for new and expectant mothers, as well as women considering pregnancy

Breastfeeding Promotion & Support Program

LMH's Breastfeeding Promotion & Support Program teaches expectant mothers about the importance of exclusive breastfeeding during the first six months of life and provides free electric breast pumps for those who complete prenatal education requirements before delivering at the Hospital. In 2014, LMH gave 326 Medela Pump in Style® units to new mothers who met the eligibility requirements.

Childhood Immunizations

Providers at Licking Memorial Pediatrics made effective use of the electronic health record to track patients' immunization records. Many of the pediatricians at LMHS have achieved outstanding immunization rates at their practices, which may have played a role in protecting the community from two outbreaks of infectious disease in 2014. The Ohio Department of Health reported an outbreak of mumps between January and July, and an outbreak of measles between March and July. Even though adjacent counties reported more than 700 cases of the two diseases, only five cases of mumps and no cases of measles were recorded among Licking County residents.



Infant Health



Active•Fit Triathlon

Kids' Place

In March, LMHS assumed responsibility of Kids' Place, an accredited child advocacy center that provides a safe and comfortable environment for the investigation and treatment of children who are suspected to have suffered neglect, physical abuse and/or sexual abuse. The restructuring move allowed LMHS to streamline administrative duties at Kids' Place and strengthen its financial outlook.

Active•Fit Youth Wellness Program and Heart to Play Pre-participation Screenings

Two innovative LMHS programs that are aimed toward the community's youth remain very popular and effective. The Active•Fit Youth Wellness Program hosted a year-round calendar of events and prize drawings for 6- to 12-year olds who achieved their goals toward physical activities, nutrition and good sleep habits. In its seventh year, the LMHS Heart to Play program offered pre-participation screenings to

the county's middle and high school students who are enrolled in physically demanding activities. Free EKGs were performed on 587 students who did not receive one the previous year, have a family history of heart disease, had symptoms of heart disease, or had a previous EKG with abnormal results. Fifty students were referred for further evaluation and treatment after preliminary results indicated possible abnormalities. One student was diagnosed with Wolff-Parkinson-White syndrome, a condition that can be life-threatening, and also was referred for further evaluation.

LMHS receives a great deal of appreciative feedback regarding the programs for infants, children and youth. By dedicating resources to improve the health and well-being of the community's residents at an early age, LMHS is laying the groundwork for the next generation to enjoy healthier, longer lives.



Active•Fit Youth Wellness Event

2014 Awards

Licking Memorial Health Systems and its dedicated employees, Medical Staff, volunteers and community members work diligently every day to ensure that the community has access to excellent health care. Their efforts were recognized in 2014 with the following awards:

100 Great Community Hospitals – 2014 by Becker's Hospital Review

Licking Memorial Hospital

HomeCare Elite Top 500™

LMH Home Care

“Top Performer on Key Quality Measures®” by The Joint Commission

Licking Memorial Hospital

Healthiest Employers of Central Ohio Award by Columbus Business First

Licking Memorial Health Systems

Healthcare Hero Award by The American Red Cross of Licking County

LMH Maternity Services, Special Care Nursery

Operation Feed Campaign Top Contributor Honors by The Food Pantry Network of Licking County

Licking Memorial Health Systems

2014 Best Places to Work in Healthcare by Modern Healthcare

Licking Memorial Health Systems

Top Twenty Percent Award in Workplace Safety by The Ohio Hospital Association

Licking Memorial Health Systems

Hospital Champions Program Gold Partner by Donate Life Ohio, The Ohio Hospital Association and the Ohio Department of Health's Second Chance Trust Fund

Licking Memorial Health Systems

Wellness & Recovery Champion Award by the Mental Health & Recovery for Knox & Licking Counties

Rob Montagnese, President & CEO

Friend of Public Schools Award by the Ohio School Boards Association (Central Region)

Rob Montagnese, President & CEO

Community Leadership Award by Modern Healthcare – Top 10 National Finalist

Rob Montagnese, President & CEO

20 Under 40 Award by The Newark Advocate

Janae M. Davis, M.D.

American Heart Association's Mission: Lifeline Silver Receiving Recognition

Licking Memorial Hospital

American Heart Association's Fit-Friendly Worksite Recognition

Licking Memorial Health Systems

100 Top Hospitals by Truven Health Analytics

Licking Memorial Hospital

LMH Donald Day Volunteer of the Year Award

Eddie and Carolyn Cline

LMHS President's Award

Brian Merritt, Director of Food Service

LMHS Building a Healthier Community Award

Thomas J. Evans Foundation

LMH Physician of the Year

Brent M. Savage, D.O., General Surgeon





Clarissa Ann Howard Nursing Award for Clinical Excellence

Jackie Chesterson, R.N., Licking Memorial Family Practice – Licking Valley
and Jennifer White, C.N.P., LMH Emergency Department



LMHS Manager of the Year

Angela Wallace, R.N., Director of Surgical Services



LMHS Lifetime Achievement Award

Patrick Jeffries



LMHS MVPs

Mike Andrews
Anna Birkmeyer
Dale Boyd
Paula Calhoun
Joyce Chenault
Laura Conley

Luke Cordonnier
Elaine Denman
Cathy Ford
Tabitha Gartner
Margie Hartsock
Julie Hopkins

Serena Howard
Cathy Kellner
Doug Kinney
Laura Kocher
Peggy Lombardo
Pat Lyons

Sue Maier
Michelle Majoy
Courtney McConaha
Tim Melick
Nicole Miller
Amber Nethers

Eric Pacht, M.D.
Meagan Reagan
Richard Riggleman
Nawar Saieg, M.D.
Rick Simon, D.O.
William Stallworth, M.D.

Bonnie Westmoreland
Lynda White
Donna Wilson
Peggy Zahrndt

Patient Experience

Licking Memorial Health Systems (LMHS) maintains its mission of improving the health of the community by providing excellent patient care with the latest technologies and medical procedures, as well as promoting good health through many of our community initiatives, such as the Active•Fit Program. Many community members have shared their appreciation for having access to outstanding healthcare resources available locally.



“When the stroke occurred last fall, I was not frightened. Everyone at Licking Memorial Hospital (LMH) took good care of me – I knew that I was more than just a number to them. After several days in the Intensive Care Unit, I was admitted to the Acute Inpatient Rehab Unit which gave me a jump start in all areas of my recovery. We focused on a combination of physical and speech therapies. When I first arrived, my right hand was limp. By the time I left one week later, I was able to eat with my right hand. For several hours every day, the staff coached me with activities to improve dexterity and strength. They also helped me walk in the hallways and up steps to improve my balance. I had short periods of rest, and then I was up and active again. The staff was really upbeat, and it rubbed off on the patients.”

– Deacon Steve DeMers, *Acute Inpatient Rehabilitation Patient*

“I remember the day that I really decided to quit smoking. I was lying in bed and just could not breathe! I called the Quit for Your Health program and made an appointment with tobacco cessation counselor Melissa Phillips, R.N. She was so easy-going and made me feel very relaxed and comfortable. She supplied me with free nicotine patches and gum, and we discussed the inevitable cigarette cravings and how I would work through them. Even now, I know that if the cravings get too strong, I can call Melissa, and she will help me work through it. I have been so impressed with the tobacco cessation program that I urged some family members and a friend to sign up. I am pleased to say that they are currently going through the program, as well.”

– Joseph Carbaugh, *Tobacco Cessation Patient*



“I read through the information about the Active•Fit Program and thought that this would be a good way for Caleb to burn off some of his excess energy. He has attended many of the Active•Fit events, including the Wii Just Dance Party, the kick-off events in Pataskala with inflatable games, the bowling event at Park Lanes in Heath, and the Health & Fitness Fest at the YMCA. Our younger son just turned six, so he is excited that he can join the program, too. It not only means something to know that he is learning the healthy way to live, but it shows him that it pays off in more than one way! He benefits all the way around. This program is so amazing! I am glad LMHS is encouraging kids to make healthy choices at a young age.”

– Evalyn Aeby on son Caleb Aeby, *Active•Fit Program Participant*





“The way that I found out that I had diabetes was strange. I had been having bad headaches, and stayed in bed a lot. I thought I was suffering from migraines. Then one day, I bought new eyeglasses. Within a week or two, I could not see very well, so I went back to the store and told them that I thought they had given me the wrong prescription. They double checked and told me that my eyes had changed since my examination, and recommended that I see my physician. I visited Dr. (Talya) Greathouse, and she ordered tests at Licking Memorial Hospital to check for diabetes. She referred me to Licking Memorial Endocrinology for more intensified diabetes care which focused on more than just the blood sugar levels and included watching for any possible complications, regularly ordering blood work to check my kidneys and liver, and checking my feet for sores.”

– Joan Davis, *Endocrinology Patient*

“At the hospital in Cambridge, an emergency room doctor said that he could tell my heart was producing cardiac enzymes, which indicated a heart attack. Unfortunately, they did not have an interventional cardiologist at that hospital to perform the procedure that I needed. They gave me options to be transferred to a different hospital with more advanced technology. I asked to be transferred to Licking Memorial Hospital where I could receive the care that I needed and be close to home. Before the procedure, the staff showed me a short video to help me understand what was going to happen. They were very thorough and understanding about answering all my questions. Before long, Dr. (Hassan) Rajjoub said, ‘We are done now,’ and I was not even aware that they had begun. I had no discomfort at all. The staff was superior. Everyone kept asking if I needed anything, or if they could do anything to make me more comfortable.”

– Robert Baggs, *Heart Care Patient*



“Last summer, my back pain was at its worst when I tried to sit or lie down for more than 10 or 15 minutes at a time. My legs also had tingling and numbness. I visited my family physician and family nurse practitioner, and they outlined my options, including physical therapy. I am very active and participate in pilates and yoga classes at the Licking County Family YMCA. I wanted therapy techniques that would complement my normal routine. Physical Therapy Assistant Tory Worstell watched over me very carefully. He continuously checked with me about any pain I was having and modified my regimen accordingly. There was one day that I was really uncomfortable. I was trying to be brave and push through the pain, but Tory took notice. He suggested that I should change plans for the day. He brought ice packs for my back and encouraged me to relax with the lights dimmed for the remainder of the session. I thought that was very kind and nurturing. The next session, I was able to get back to my normal exercise routine. I have been telling everyone that it just makes more sense to go to LMH for their care. The research shows that in many instances, the care is better at a community hospital, and the staff gets to know you.”

– Maureen Clark, *Physical Therapy Patient*

Boards of Directors

Licking Memorial Health Systems Board of Directors

The Licking Memorial Health Systems (LMHS) Board of Directors oversees all aspects of LMHS' three corporations: Licking Memorial Hospital, Licking Memorial Professional Corporation and Licking Memorial Health Foundation. As volunteer community leaders, the Board Members serve to ensure LMHS provides the best care and services available.



Patrick M. Jeffries
Chairman



Linda K. Dalgarn
Vice Chairman



Kim Fleming
Secretary/Treasurer



Michael D. Cantlin



Eschol Curl, Jr.



Patrick D. Guanciale



Judith B. Pierce



Gary A. Ryan



Gerald R. Ehram, M.D.
Physician Advisor



Robert A. Montagnese
Ex Officio
Licking Memorial
Health Systems
President & CEO

Slogan: *Measurably Different ... for Your Health!*

Vision: *To be the best community healthcare facility in the state of Ohio.*

Licking Memorial Hospital Board of Directors

In 1898, a small group of dedicated women opened a nine-bed Hospital with donated furnishings in a converted house at 154 North Third Street in Newark to meet the needs of the community. After many evolutions throughout the past century, Licking Memorial Hospital now stands on West Main Street with 227 beds and state-of-the-art technology ready to serve the community. Today, like their predecessors, our Board of Directors is made up of dedicated individuals who volunteer their time to guide the operations and policies of the Hospital.



Craig R. Baldwin
Chairman



Nancy G. Neely
Vice Chairman



Michael J. Massaro
Secretary



Joyce L. Malainy, Ed.D.
Treasurer



David E. Doney



David L. Hile



Cheri Hottinger



Laurel B. Kennedy, Ph.D.



Deborah A. Kohman



Brian Mortellaro



Rev. Michael A. Noble,
B.A., M.Div., D.Min.



Sharad Thakkar, Ph.D.



Bart M. Weiler



Robert A. Montagnese
Ex Officio
Licking Memorial
Health Systems
President & CEO



Eric Pacht, M.D.
Ex Officio
Licking Memorial
Hospital
Chief of Staff

Hospital-Wide Directives

- Promote patient safety
- Incorporate innovation and technology
- Maintain financial strength
- Meet community needs
- Maintain independence
- Deliver quality care
- Adhere to corporate integrity
- Attain service excellence
- Cultivate relationships with patients, customers and employees

Licking Memorial Health Systems Senior Management

The 10 members of the Licking Memorial Health Systems (LMHS) Senior Management have extensive experience that provides strong leadership. With their collective background and vision, LMHS is able to proactively meet the community's needs.



Robert A. Montagnese,
C.P.A., M.H.A., B.A.
President & CEO
Making a difference
since 1993.



Sallie K. Arnett,
M.S., RHIA
Vice President
Information Systems
Making a difference
since 2001.



Craig B. Cairns,
M.D., M.P.H.
Vice President
Medical Affairs
Making a difference
since 1999.



Veronica K. Link, B.B.A.
Vice President
Development &
Public Relations
Making a difference
since 1984.



Christine L. McGee,
R.N., B.B.A.
Vice President
Physician Practices
Making a difference
since 1995.



Anne C. Peterson, B.A.
Vice President
Human Resources &
Support Services
Making a difference
since 2001.



Cindy L. Webster, B.B.A.
Vice President
Financial Services
Making a difference
since 1991.



Deborah M. Young, R.N.,
M.S., C.C.M.
Vice President
Patient Care Services
Making a difference
since 1996.



Heather Burkhart, R.N.
Assistant Vice President
Inpatient Services
Making a difference
since 2000.



Greg Wallis, R.N.,
B.S.N., CNOR
Assistant Vice President
Outpatient Services
Making a difference
since 1997.

Licking Memorial Hospital Medical Staff Executive Committee

The Licking Memorial Hospital (LMH) Medical Staff Executive Committee is comprised of the Medical Staff officers and the chiefs of each Medical Staff department. Committee members set policies, review new physicians' credentials, analyze cases and help to educate staff members on medical advances.



Eric R. Pacht, M.D.
Chief of Staff



Talya R. Greathouse, M.D.
Vice Chief of Staff



Lori J. Elwood, M.D.
Secretary/Treasurer
Department Chief of
Pathology



Peter T. Nock, D.O.
Immediate Past
Chief of Staff



Richard A. Baltisberger, M.D.
Department Chief of
Pediatrics



Garth A. Bennington, M.D.
Department Chief of
Family Practice



Joseph E. Fondriest, M.D.
Department Chief of
Radiology



Shakil A. Karim, D.O.
Department Chief of
Medicine



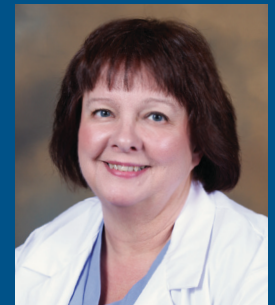
Eric M. Layne, M.D.
Department Chief of
Behavioral Health



KW Tim Park, M.D.
Department Chief of
Anesthesiology &
Pain Management



Brent M. Savage, M.D.
Department Chief of
Surgery



M. Jane Scott, M.D.
Department Chief of
Emergency Medicine

2014 Licking Memorial Hospital Medical Staff Appointments

Highly-qualified and skilled professionals who joined the LMH Active and Consulting Medical Staffs in 2014 include:

Stacey Y. Guan, M.D.
Lisa M. Karres, D.O.
Asegid H. Kebede, M.D.
Brian W. Korn, D.O.

Mohammed K.A. Mazumder, M.D.
Marita L. Moore, M.D.
D'Anna N. Mullins, M.D.
Kathleen M. Rogers, M.D.

Laurie J. Schaeffer, D.O.
Aleksandar Tancevski, M.D.
Raul Weiss, M.D.
Elizabeth A. Yoder, D.O.

Grant L. Yoder, D.O.

Changes, Enhancements and Technology

Licking Memorial Health Systems (LMHS) is dedicated to keeping abreast of medical advances and improving the healthcare experience for patients and their families. In many instances, the changes are subtle and take place without the public's awareness. Changes and improvements at LMHS over the past year include:



Quit for You, Quit for Your Baby Program

Tobacco Cessation Services Now Provided at Licking Memorial Women's Health

Licking Memorial Women's Health in Newark added the Quit for You, Quit for Your Baby program in 2014 to help pregnant patients improve the health of their newborn babies. Expectant mothers who smoke or use other forms of tobacco can visit their obstetrician/gynecologist and receive free tobacco cessation services during the same visit. The Quit for Your Health program at Licking Memorial Hospital (LMH) was first established in 2009, after funding for a statewide tobacco prevention program was eliminated. LMH recognized the importance of continuing an anti-tobacco program to lower the high rate of tobacco use in Licking County.

New Procedure Allows Minimally Invasive Repair of Aortic Aneurysms

For patients requiring surgical treatment to repair an abdominal aortic aneurysm (AAA), a new, minimally invasive procedure is now being performed at LMH. Howard L. Reeves, D.O., of Surgical Interventions,

LLC, received specialized training in Percutaneous Endovascular Aortic Aneurysm Repair (PEVAR) and began offering the procedure at LMH in December 2013. Along with traditional surgical and endovascular procedures, PEVAR is a safe and effective treatment that can repair AAA and significantly reduce the risk of rupture.

Upgrades to EKG Transmission System

In 2007, LMHS made a generous \$300,000 donation to create a unified electrocardiogram (EKG) relay system in Licking County and, in 2014, invested more than \$600,000 to upgrade the aging equipment. LMHS purchased new LIFEPAK® EKG monitors for 31 emergency medical squads (EMS) in the county that were in need of an upgrade. The technology, when coupled with LIFENET® Receiving Stations in the LMH Emergency Department and catheterization lab, helps to significantly reduce a patient's time to receive life-saving treatment at the Hospital. LMH has consistently performed well, in large part, because first responders throughout Licking County are equipped with 12-lead EKG monitors to record and transmit patient data to the LMH Emergency Department prior to arrival.

My.LMHealth.org Offers Secure Online Access to Medical Record Information

As part of its mission to improve the health of the community, LMH now offers an online Patient Portal which allows patients to manage their health information securely and conveniently. My.LMHealth.org is available 24 hours per day, seven days per week from any device with a Web browser – such as a computer, smartphone or tablet.

All of the information in the Patient Portal comes from a patient's LMH Electronic Health Record, allowing

it to be accurate and up-to-date. Each account is secured using specific security measures to prevent unauthorized individuals from accessing medical record information that is not their own.

LMH – Tamarack Adds Sleep Lab

In 2014, Licking Memorial Sleep Lab relocated to LMH – Tamarack located at 2000 Tamarack Road, in Newark. Formerly on the sixth floor of the Hospital, the LMH Sleep Lab is now located on the second floor of LMH – Tamarack. To assist with quality of sleep and daytime alertness, the comprehensive Sleep Lab offers overnight sleep studies on an outpatient basis that can reveal the cause of chronic fatigue or sleeplessness. The services at LMH – Tamarack are contracted through Sleep Care, Inc., and overseen by Eric R. Pacht, M.D., of Licking Memorial Pulmonology and Sleep Medicine. Following an assessment, patients will meet with Dr. Pacht during a follow-up appointment for a complete explanation of the study results and treatment options. The LMH Sleep Lab is nationally accredited by the American Academy of Sleep Medicine.

LMH Infant Safety Campaign

The Ohio Hospital Association implemented several areas of focus for 2014-2016 to help address Ohio's overall infant mortality rate (ranked 47th in the U.S. in a national study) and engage patients and the community with effective clinical and professional resources. The seven areas of focus include safe sleep, eliminating elective deliveries before 39 weeks, offering progesterone for high-risk mothers, eliminating health disparity, safe spacing, access to prenatal care, and the use of breast milk for infants. The goal is to improve Ohio's infant mortality rate by 5 percent each year. LMHS has implemented and continued several initiatives aimed at infant safety in

collaboration with the OHA's focus areas, including a policy to not induce labor prior to 41 weeks of pregnancy.

To further protect infants, LMH staff educates expectant parents upon admission concerning all safeguards in place at the Hospital. These include mother and child, family and staff identification, unit security, and infant care procedures.

Lower Risk Cardiac Catheterization Now an Option at LMH

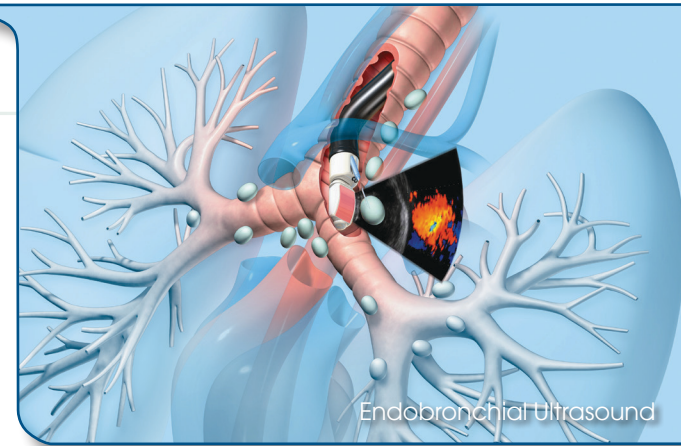
According to a National Cardiovascular Data Registry report, more than 95 percent of cardiac catheterizations in the United States were performed through the femoral artery – a major artery which is accessed through a patient's groin – as recently as 2008. However, a growing number of physicians, including Interventional Cardiologist Hassan Rajjoub, M.D., have obtained specialized training and proficiency in performing transradial cardiac catheterization as a less invasive option.

In the transradial procedure, a catheter is inserted through the wrist into the radial artery – one of the main arteries in the arm – and threaded to the heart arteries. There is a low risk of bleeding because the radial artery is small and near the surface of the skin, and patients are able to sit upright immediately after the procedure.

Endobronchial Ultrasound Offers Minimally Invasive Surgical Assessment of Lung Cancer

LMH has added a new tool to help physicians determine the stage of a patient's lung cancer and develop an appropriate course of treatment. Endobronchial ultrasound-guided transbronchial needle aspiration is a minimally invasive surgical procedure that combines sound wave technology with bronchoscopy to allow the surgeon to visualize areas deep in the lungs and, if necessary, take tissue samples for biopsy and staging (determining how much cancer has spread).

Asegid H. Kebede, M.D., of Licking Memorial Pulmonology, received special training to perform the



endobronchial ultrasound procedure, which is an alternative to lung biopsies that are performed through conventional surgery or examination of the patient's sputum. For many patients, endobronchial ultrasound may be the preferred method because it does not require an incision, is highly accurate and allows the surgeon to examine lymph nodes from an area that is otherwise difficult to reach.

EKG Management System Improves Cardiology Workflow

New technology has improved the way that physicians at LMH are able to read and utilize electrocardiograms. The MUSE Cardiology Information System was recently implemented in the Cardiology Department as an upgraded digital system for inputting and interpreting medical information.

MUSE offers connectivity with cardiology diagnostic tools including EKG tests, stress tests, and Holter monitor devices. The diagnostic results from these devices are all integrated in the MUSE System, allowing for better patient triage, access to current and historical EKG results for comparison, and automating patient demographics. MUSE is a complete electronic repository of cardiac information – including everything from billing to delivering results. The System, which went live in April 2014, allows for tracking information and makes comparisons from previous EKG tests on a patient easier and more accessible, ultimately enhancing quality for patients.



LMH Cardiology Team

Community Events

Licking Memorial Health Systems (LMHS) welcomes and encourages community input in order to ensure that our technology and services anticipate patients' constantly changing needs. Residents and employees were invited to many events during 2014 to celebrate areas of growth and to become familiar with the healthcare environment. Community events in 2014 included:



Corporate Breakfast

Corporate Breakfasts – The Licking Memorial Hospital (LMH) Development Council hosted four Corporate Breakfasts in 2014. The events served to acquaint local business and community leaders with new services, technology and health trends within the Hospital, as well as within the healthcare industry as a whole. This year's topics included a summary of the Health Systems' accomplishments and activities in 2013, an ophthalmology update, an overview of urological services offered at LMH and winter safety health advice.

Pastoral Care Event – In April 2014, LMH hosted its annual dinner for members of Licking County's clergy. The event featured a presentation about organ donation, including an overview of the process, myths and facts about donation, and registration procedures to become a designated donor. In addition to providing religious and spiritual services to patients and their families and visitors, as well as staff members, the LMH Pastoral Care Department also serves as the liaison between the Hospital and local clergy.

Cancer Survivors' Picnic – In recognition of National Cancer Survivors' Day, LMH hosted its fourth-annual Cancer Survivors' Picnic on June 8. LMH patients, guests and employees gathered in the Hospital Café to celebrate and support cancer survivors, and to honor lost loved ones.



Cancer Survivors' Picnic

Donor Appreciation Reception – LMHS thanked contributors during the annual Donor Appreciation Reception in September. The event is an opportunity for donors to be recognized for their generous gifts and receive information on current and future projects at LMHS. At the 2014 reception, the latest piece in the LMHS Main Street Collection, a replica of the Betsy Eaton O'Neill Health Resource Center, was unveiled for donors who have reached the \$8,000 level of giving. All donations are used to purchase new medical equipment and technology, and enhance the healthcare facilities at LMH.



Donor Appreciation Reception

Baby Expo – LMH hosted its inaugural Baby Expo on October 19. The free event catered to new mothers, expectant mothers and women considering pregnancy, and featured vendor displays, speakers and information. Covered topics included pregnancy care, nutrition for mother and baby, breastfeeding, newborn needs, and information about LMH's classes and services for new mothers and babies.

Lifetime Achievement Reception – Each fall, the LMH Development Council hosts the Lifetime Achievement Reception in recognition of individuals who have made an extraordinary difference in the community. Patrick M. Jeffries received the 2014 Lifetime Achievement Award for his dedication and vision to help Licking County residents through his leadership roles in the community. The Lifetime Achievement Award was created in 1989 and is the highest award that LMHS confers each year. The Development Council also presented The Thomas J. Evans Foundation with the 10th annual Building a Healthier Community Award in recognition of their bike path system consisting of more than 44 miles of trails which are part of the Licking County Recreation and Transportation Corridor.



Lifetime Achievement Reception



Baby Expo

LMH Support Groups – In 2014, LMH continued to offer the community a variety of support groups. Free meetings were offered at various times throughout each month and included groups such as A New You: Weight Loss Support Group, a Breast Cancer Support Group, an Oncology Nutrition Support Group and the First Impressions Breastfeeding Mothers Support Group. The support groups provide education and discussion led by LMH employees who have expertise in the subject matter.

TWIGS and Volunteer Recognition Dinners – The annual TWIGS Recognition Dinner took place on May 8. The TWIGS organization raised \$138,668 in donations throughout 2014, and LMH was proud to honor their outstanding dedication to the Hospital. The annual Volunteer Recognition Dinner took place on April 17, to pay tribute and show gratitude to more than 100 individuals who regularly devote their time to LMH. During the event, Eddie and Carolyn Cline were the recipients of the 2014 Donald Day Volunteer of the Year Award in recognition of their dedication and commitment to serving the community through the Hospital. Eddie and Carolyn have served over 9,000 hours combined.

Community Outreach

Licking Memorial Health Systems (LMHS) is firmly committed to our mission, “To Improve the Health of the Community.” The best way to protect community health is to prevent injury and disease; therefore, LMHS devotes many resources to educating the public about healthier lifestyles and proper medical care. In addition, LMHS is committed to giving back to the community through support of local groups and events.

The public is apprised of all LMHS programs and health trends through press releases, local media, the bimonthly Community Connection publication, monthly Quality Report Cards and an extensive website.

LMHS partnered with many local organizations throughout 2014 for various events, including American Red Cross blood drives, Active•Fit events, and the “For Your Health” 5K Run and Fun Walk. Most of LMHS’ programs and screenings are offered free of charge. Others are provided at a nominal cost.

2014 events, programs and sponsorships include:



Active•Fit Junior Chef Event

January

Community Roundtable with youth sports league leaders
Community Roundtable with manufacturers
Community Education Program – Are You at Risk for a Heart Attack?
Licking Memorial Hospital (LMH) 116th Birthday Celebration – winter outerwear donation by LMHS employees to the Center for New Beginnings and Salvation Army of Licking County
Hosted Red Cross blood drive at LMH
Ongoing monthly programs – Ask the Doc at Shepherd Hill, LMHS Diabetes Self-Management Classes, Childbirth Education classes, CPR classes, blood pressure screenings at C-TEC

Pathways of Central Ohio, 2014 Platinum sponsorship
Food Pantry Network of Licking County, 2014 Food Drive/ Supermarket Sweep sponsorship
Par Excellence Academy, 2014 Martin Luther King Breakfast sponsorship
Grow Licking County Community Improvement Corporation, Grow Licking County
Newark High School Athletic Boosters, 2014 Youth Softball sponsorship
Licking County Chamber of Commerce, 2014 Groundhog Breakfast sponsorship
United Way, Corporate Donation sponsorship
Mental Health America of Licking County, 2014 Java and Jazz sponsorship
LUNgevity Foundation, 2014 Breathe Deep Newark Walk/ Rally Bronze sponsorship
Grand Scheme Promotions, LLC, 2014 Granville Art and Wine Festival sponsorship
Newark Catholic Athletic Association, 2014 sponsorship
Mound City Little League, 2014 sponsorship
National MS Society, 2014 MS Walk sponsorship
Licking County Medical Society, 2014 Winter Meeting sponsorship

February

Community Roundtable with athletic directors
The Heart Truth – A Red Dress Event
American Red Cross AMIGO Challenge
Active•Fit Junior Chef Event at C-TEC
Community Education Program – Nutrition and Exercise for Life

Corporate Breakfast Program – 2013: The Year in Review and a Look into 2014
STEMfest at The Works
Ongoing monthly programs – Ask the Doc at Shepherd Hill, LMHS Diabetes Self-Management Classes, Childbirth Education classes, CPR classes, blood pressure screenings at C-TEC
Granville Cub Scout Pack 3, 2014 Blue and Gold Event Banquet sponsorship
LICCO, Inc., 2014 Spring Fitness 5K sponsorship
Newark Generals Varsity Hockey, 2014 Calendar sponsorship
Big Brothers Big Sisters, 2014 Ultimate sponsorship
Lakewood Athletic Boosters, Stadium Project sponsorship
Licking Valley Youth Sports Association, 2014 Baseball Team sponsorship
Lakewood Youth Baseball Association, 2014 Double sponsorship
Newark Catholic High School, 2014 Touch of Class Dinner & Auction sponsorship
Utica Athletic Boosters, 2014 Softball sponsorship
Heath Community 5K, 2014 Corporate sponsorship
The Children’s Reading Foundation of Licking County, 2014 Reach Out and Read Campaign sponsorship
Licking County Foundation, Newark Kiwanis – Newark Strawberries on the Square Festival sponsorship
Weathervane Playhouse, 2014 Corporate Partners sponsorship
Heath Sertoma Youth Athletic Association, 2014 Team sponsorship



LMHS Family Movie Night/Active•Fit Youth Wellness Event – at the Pataskala Health Campus

March

Doctors' Day Recognition
 Hosted Red Cross blood drive at LMH
 Supermarket Sweep (Operation Feed)
 Health & Fitness Fest
 Active•Fit Youth Wellness Program Presentation – Welsh Hills
 Community Education Program – Friends and Family CPR
 Ongoing monthly programs – Ask the Doc at Shepherd Hill, LMHS Diabetes Self-Management Classes, Childbirth Education classes, CPR classes, blood pressure screenings at C-TEC
 Licking Valley Heritage Society, 2014 Red, White and Blue Kaboom sponsorship
 Heartbeats, 2014 Happy, Happy, Happy 100-Hole Challenge sponsorship
 Velvet Ice Cream, 2014 Ice Cream Festival sponsorship
 Zonta Club of Newark, 2014 Champagne Luncheon and Style Show sponsorship
 Granville High School, Alternate Spring Trip sponsorship
 Stand Up for SWL Kids, contribution
 American Cancer Society, 2014 Sponsorship Pataskala Relay for Life sponsorship
 Twentieth Century Club, 2014 Pro-Am Invitational Platinum sponsorship
 Granville Recreation District, 2014 Concert on the Green sponsorship
 Foundation for Hospice of Central Ohio, 2014 Golf Outing Hole Sponsor
 Lakewood Girls Summer Softball, 2014 Softball Team sponsorship
 Licking County Family YMCA, 2014 Don Edwards Park sponsorship

April

Community Education Program – Dining with Diabetes
 Community Education Program – Total Knee Replacement
 Pastoral Care Dinner
 Active•Fit Youth Wellness Program informational table at Youth Sports Opening Ceremonies – Southwest Licking, Granville Rec Center
 Ongoing monthly programs – Ask the Doc at Shepherd Hill, LMHS Diabetes Self-Management Classes, Childbirth Education classes, CPR classes, blood pressure screenings at C-TEC
 AIM at Melanoma, 2014 Granville Walk sponsorship
 North Newark Little League, 2014 Farm and Varsity Team sponsorships
 United Way of Licking County, Annual Meeting and Recognition Breakfast sponsor
 United Way of Licking County, 2014 United Race sponsorship
 C-TEC, Donation for Outstanding Medical Assisting Student-of-the-Year
 Newark Development Partners Community Improvement Corporation, Support of the City of Newark to demolish property that was hazardous to the health of the community
 The Woodlands, 2014 New Beginnings Purse with a Purpose sponsorship
 American Cancer Society, Newark Relay for Life sponsorship
 Carol Strawn Center, 2014 Walk to Care for Alzheimer's sponsorship
 Komen Columbus Race for the Cure, 2014 Komen Race for the Cure team sponsorship
 Johnstown Athletic Boosters, 2014 sponsorship of Johnstown cheerleaders

Rotary Club of Pataskala, 2014 Flags over Pataskala sponsorship
 Watkins Athletic Association, 2014 Golf Outing Hole Sponsor

May

Community Roundtable with community leaders of Pataskala
 Hosted Red Cross blood drive at LMH
 Park National Bank's Shred-It Day
 LMHS Family Movie Night/Active•Fit Youth Wellness Event – at the Pataskala Health Campus
 Active•Fit Period 2 Winners Reception
 Community Education Program – Skin Cancer Awareness
 40th Annual Old Fashioned Velvet Ice Cream Festival
 Newark Kiwanis Strawberries on the Square Festival
 Active•Fit Youth Wellness Program informational table at Youth Sports Opening Ceremonies – North Newark, Licking Valley, Lakewood, Heath, Northridge, NASA
 Corporate Breakfast Program – Ophthalmology Update 2014
 Breastfeeding and Infant Health Fair
 Aim for the Cure Walk
 Coughlin Cars Fun Flash and 5K Dash
 Relay for Life of Licking County
 Pre-participation Sports Screenings for Licking County Student Athletes
 Ongoing monthly programs – Ask the Doc at Shepherd Hill, LMHS Diabetes Self-Management Classes, Childbirth Education classes, CPR classes, blood pressure screenings at C-TEC
 Ohio Hospital Association, 2014 Annual Meeting and Recognition Dinner
 Ohio Cancer Research Associates, 2014 Grand Illusions Toast – John W. Alford
 Ronald McDonald House Charities of Central Ohio, 2014 Support of Ronald McDonald House Charities
 West Licking Firefighters Association, 2014 Pataskala Street Fair sponsorship
 Licking County Family YMCA, 2014 Golf for Youth sponsorship
 American Cancer Society Southwest Region, 2014 Making Strides Against Breast Cancer Walk in Newark
 Pataskala Area Chamber of Commerce, 2014 Sponsorship of Golf Outing

June

Community Roundtable with community leaders of Granville
Camp Feelin' Fine – a day camp for children with asthma
Community Education Program – Nutrition and Exercise for Life
Active•Fit Mini Triathlon
Golf Gala
Cancer Survivors' Picnic
Granville Art Affair and Wine Festival
Active•Fit Youth Wellness Program Presentations – Cub Scout Camp
Pre-participation Sports Screenings for Licking County Student Athletes
Ongoing monthly programs – Ask the Doc at Shepherd Hill, LMHS Diabetes Self-Management Classes, Childbirth Education classes, CPR classes, blood pressure screenings at C-TEC
Licking County Chamber of Commerce, 2014 Annual Awards Dinner sponsorship
Licking County Health Department, Kickin' Ash Splash Pool Party 2014 sponsorship
Saint Vincent Haven, 2014 Charity Golf Outing sponsorship
Heartbeats, 2014 Fifth Annual Together for Life Walk sponsorship

July

Community Education Program – Dining with Diabetes
Community Education Program – Hearing Loss
Community Education Program – Preventive Dental
Community Education Program – Sleep Apnea
Active•Fit Bowling

Active•Fit Field Day
Pataskala Relay for Life
Johnstown Relay for Life
Granville Concert on the Green
Salvation Army Day Camp
Ongoing monthly programs – Ask the Doc at Shepherd Hill, LMHS Diabetes Self-Management Classes, Childbirth Education classes, CPR classes, blood pressure screenings at C-TEC
Granville Rotary Club, 2014 Annual Firecracker 5K Road Race sponsorship
Heath Band Boosters, 2014 football field banner renewal
Licking County Prayer Partners, 2014 Prayer Breakfast
Licking County Coalition of Care, 2014 Ultimate Elvis Tribute sponsorship
Utica Athletic Boosters, 2014 Utica Track and Field sponsorship
Look Up Center, 2014 annual donation
Camp O'Bannon, Annual Camp O'Bannon Golf Outing – Hole Sponsor
Licking County Family YMCA Western Branch, 2014 Mother Son Superhero Training sponsorship
Licking County Junior Achievement, 2014-15 Junior Achievement Program sponsorship
Licking Valley Boosters Program, 2014 Feed the Team Program sponsorship
United Way of Licking County, 2014 Shoot for the Stars Night Golf sponsorship
American Diabetes Association, 2014 Art of Giving Gala – Patron Table sponsorship
United Way of Licking County, 2014 Day of Caring sponsorship



August

Community Education – Lung Cancer
Community Education – Osteoarthritis
Community Education – Rotator Cuff Repair
“For Your Health” 5K Run and Fun Walk at Dawes Arboretum
Active•Fit 1K
Hartford Fair – steer purchase for donation to Salvation Army
Community Roundtable with police and fire chiefs
Pataskala Street Fair and Parade
Hosted the Pataskala Area Chamber of Commerce Luncheon
Ongoing monthly programs – Ask the Doc at Shepherd Hill, LMHS Diabetes Self-Management Classes, Childbirth Education classes, CPR classes, blood pressure screenings at C-TEC
Watkins Middle School PTO, 2014 Standing with Administration and Teachers Against School Violence Campaign sponsorship
Redskin Athletic Boosters, 2014 Utica Boys Basketball sponsorship
Lou & Gib Reese Ice Arena, second year of a two-year sponsorship
Pelotonia, LMH Physicians' sponsorship
Cade and Katelyn Fund, 2014 Hole Sponsor
Licking County Historical Society, Eagle Sponsor
Rotary Club of Pataskala, Battle for Broad Street sponsorship
Granville Athletic Boosters, 2014 Football Program sponsorship
Licking Valley Heritage Society, Friends of Blackhand Gorge – Trails Through Time Race
Newark Generals Hockey, 2015 Fundraising Calendar sponsorship
Licking County Job & Family Services, Citizens for Children Services Levy support
The ALS Association Central & Southern Ohio Chapter, Ice Bucket Challenge – Rob Montagnese



Pataskala Relay for Life

September

Corporate Breakfast Program – Urological Services at Licking Memorial Hospital
Savings Expo
Newark Jaycees Festival
Newark First United Methodist Church Block Party
LMHS Family Movie Night – at Denison University
Donor Appreciation Reception
Newark – Granville Altrusa Fun Run/Walk
Active•Fit Youth Wellness Program Presentation – Welsh Hills
Community Education Program – Tinnitus
Ongoing monthly programs – Ask the Doc at Shepherd Hill, LMHS Diabetes Self-Management Classes, Childbirth Education classes, CPR classes, blood pressure screenings at C-TEC
The Granville Inn Granville Chili Cook-off
Granville Chamber of Commerce, 2014 golf outing sponsorship
Licking County Courthouse Lighting Committee, 2014 sponsorship
Newark-Granville Symphony Orchestra, 2014 Corporate Partner Sponsor – Management Partner
Granville Kiwanis Foundation, 2014 Maple Leaf 5K Run/Walk – Silver Sponsor
South Newark Civic Association, 2014 support of the organization’s mission for the community
PBJ Connections 7th Annual Helping Horses Help Kids – sponsorship
Thomas J. Evans Foundation Food Enterprise Hub – donation
Granville Area Chamber of Commerce Candlelight Walking Tour – Silver Sponsor
Granville Area Chamber of Commerce – Tree Sponsor
Newark Heath Rotary Annual Memorial – golf outing sponsorship
United Way of Licking County Community Blueprint Needs Assessment Survey – donation
Granville Athletic Boosters – donation for the purchase of the soccer shelters

October

Community Education Program – Dining with Diabetes
Community Roundtable with realtors
Hosted Red Cross blood drive at LMH
Washington Square Plaza – Fall-a-palooza
Kroger Trick-or-Treat
Safe Trick or Treat on the Square
Active•Fit Youth Wellness Program Presentation – Scores for Schools – Lou & Gib Ice Arena
Active•Fit Youth Wellness Program Presentation – St. Francis de Sales
Baby Expo
Hosted Art of Recovery Reception
Ongoing monthly programs – Ask the Doc at Shepherd Hill, LMHS Diabetes Self-Management Classes, Childbirth Education classes, CPR classes, blood pressure screenings at C-TEC
Northridge PTO, 2014 Viking Level Walk-a-Thon Sponsor
Citizens for the Granville Public Library, donation in support of the Granville Library Levy
The Dawes Arboretum, 2014 Buckeye sponsorship
Newark City Schools, Citizen of the Month Luncheon sponsorship
Utica Athletic Boosters, Utica Girls’ Basketball Program sponsorship
Operation Warm, donation in support of Newark Firefighters as ambassadors of Operation Warm
Licking County Family YMCA, Skit Guys sponsorship
Licking County Coalition for Housing, 2014 Annual Luncheon sponsorship
Women in Service Everyday, 2014 Silver Bells Christmas Bazaar sponsorship
West Licking Professional Firefighters IAFF Local 3025, 2014 Breast Cancer Awareness Campaign sponsorship
Granville Exempted School District, 2014 Arrive Alive Program sponsorship
United Way of Licking County, 2014 Zombie Rundown sponsorship
Central Ohio Youth Ballet, 2014 Pirouette Sponsorship
St. Luke’s Episcopal Church, 2014 Granville Turkey Trot Shirt Sponsorship
Behavioral Healthcare Partners of Central Ohio, 2014 Annual Dinner – Level II Sponsor
Mental Health America of Licking County, 2014 Annual Dinner sponsorship
Pathways of Central Ohio Early Childhood Conference, 2015 Platinum Sponsor



November

LMHS Lifetime Achievement Reception
Funeral Directors’ Breakfast
Corporate Breakfast Program – Focus on Winter Safety
Community Education Program – Men’s Health
Community Education Program – Cholesterol Management
Active•Fit Youth Wellness Program Presentation – Scores for Schools – Lou & Gib Ice Arena
Active•Fit Youth Wellness Program Presentation – The Citadel
Ongoing monthly programs – Ask the Doc at Shepherd Hill, LMHS Diabetes Self-Management Classes, Childbirth Education classes, CPR classes, blood pressure screenings at C-TEC
Granville Robotics Boosters, 2014-2015 Robotics Club sponsorship
Granville Board of Education, Granville Intermediate School/5th Grade Class Project “Walking Classroom” contribution
Newark Athletic Boosters Club, 2014-2015 – Winter/Spring sponsorship
Licking County Chamber of Commerce, 2014 Local Leaders Breakfast sponsorship
Hope Farm Granville, general sponsorship for 2014
Watkins Memorial Athletic Association, Watkins Lady Warriors Basketball Program sponsorship
Newark Catholic Athletic Association, 2014-2015 Boys Basketball Program sponsorship



Art of Recovery Reception

December

Community Roundtable with local attorneys
Hosted Red Cross blood drive at LMH
Active•Fit Youth Wellness Program Presentation – Scores for Schools – Lou & Gib Ice Arena
Holiday Magic with Santa event
Pataskala Christmas Walk
Ongoing monthly programs – Ask the Doc at Shepherd Hill, LMHS Diabetes Self-Management Classes, Childbirth Education classes, CPR classes, blood pressure screenings at C-TEC
Licking County Chamber of Commerce, 2015 Annual Groundhog Breakfast sponsorship
National MS Society, 2015 MS Walk at Dawes Arboretum sponsorship
St. Vincent Haven, Annual Appeal donation
Licking County Family YMCA, Western Branch, Daddy’s Little Girl Dance sponsorship
Simon Kenton Council, 2014 Healthcare Lunch/General Operating Proposal/Mayor’s Breakfast donation
Licking Valley Athletic Boosters, 2015 Spring/Fall baseball banner sponsorship
Grand Scheme Promotions, 2015 Granville Art Affair sponsorship
Par Excellence Academy, Martin Luther King Breakfast sponsorship
Carol Strawn Center, Euchre Tournament fundraiser sponsorship

Speakers Bureau, Health Fairs, and Screenings – In 2014, LMHS provided speakers and health screenings to the community through the following organizations and events:

ActionOhio
Anomatic
Buckeye Lake Seniors
C-TEC Massage Therapy Class
C-TEC Senior Citizen Day
Center for Disability Services
COTC Nursing Class
Daughters of the American Revolution
Denison University Career Fair
Denison University – Employee Health and Wellness Fair
Dining with Diabetes Holiday Reunion
Eden Block Watch
The Energy Cooperative
First Federal Savings
First Presbyterian Church
Flying Colors Preschool
Foster Grandparent Program
Granville Middle School – Arts Mania Day
Granville Kiwanis

Heath Fire Department – Open House
Hendrickson
John Clem Elementary – “Just Say No” Club
Kendal at Granville – Employee Health Fair
Lakewood Middle School
Liberty Christian Academy
Liberty Middle School
Licking County Aging Program
Licking County Family YMCA – Activate Youth Program
Licking County Government – Health Fair
Licking County Library
Licking County Prayer Partners’ Breakfast
Licking County Senior Expo
Licking/Knox Goodwill Industries
Licking Valley Schools
Monroe Township Fire Department – Open House
Newark City Schools – Employee Health Fair
Newark – Heath Rotary Club
Newark Metropolitan Hotel

Newark Rotary
Northside Church of Christ Health Fair
The Ohio State University – Newark Lunch and Learn
PAR Excellence Academy – Health Fair
Pataskala Library Story Trail
Pataskala Rotary
Professional Development Center for Early Learning
St. Francis de Sales Church – Women’s Group
Salvation Army – Power for Life
The Shelly Company
Shiloh Missionary Baptist Church
Southwest Licking Schools – Employee Health Fair
Tectum, Inc.
TOPS – Newark
Trinity Episcopal Church
Welsh Hills School
Wilson Middle School
YMCA Healthy Kids Day



Development Council

The Licking Memorial Hospital (LMH) Development Council was established in 1987 and falls under the auspices of Licking Memorial Health Foundation. The Development Council's mission is: To increase charitable giving to the Hospital, and to enhance and promote meaningful community relations resulting in the Hospital's ability to meet community needs and better serve its publics. Although LMH is financially sound, it is not immune to today's financial challenges that include government cutbacks in Medicare and Medicaid reimbursements, revenue shortfalls and the continuing cost of charity care. Donations to Licking Memorial Health Foundation enable LMH to provide for capital needs, services and programs that may otherwise go unfunded. Licking Memorial Health Foundation is a not-for-profit corporation.

Executive Committee

Robert McGaughy, Chairman P. David Shull, Vice Chairman Glenn Abel Thomas Cumiskey	John Gard Thomas Hall, M.D. Sally Heckman Patrick Jeffries	Bonnie Manning Mary Jane McDonald Chris Meyer James Mitchell	Stuart Parsons Rob Montagnese, Ex Officio with vote	Craig Baldwin Ex Officio without vote
---	---	---	---	--

Annual Support Committee

Thomas Cumiskey, Chairman James Mitchell, Vice Chairman James Atkinson Michael Buskirk Mary Jane Carrier	Seth Conley David Doney Seth Ellington Jill Evans Andrew Guanciale	Donald Hill Jeff James Nicole Judd Joyce Malainy, Ed.D. Jerry McClain	Mike McFarland Joan Omlor Steve Schlicher Doris Spriggs Jack Stickle, II	Russell Suskind Stacy Thompson Doug Ute Ashley Wade Charles Walker
--	--	---	--	--

Community Relations Committee

Sally Heckman, Chairman Chris Meyer, Vice Chairman Tony Adams Maggie Barno Ryan Bernath	Ed Bohren Karen Burger Marcia Downes Stephen Fowler C. Ann Howard	Patrick Jeffries Melissa Johnston Willard (Bill) Kuhlwein Michele Layman William Mann	Mary Jane McDonald Thomas Mullady Robert O'Neill Diane Paetz Steve Stilwell	Jennifer Utrevis John H. Weaver Linda Wiegand Gordon Wilken James Young
---	---	---	---	---

Education and Membership Committee

John Gard, Chairman Bonnie Manning, Vice Chairman Mary Albright Julie Barrett Jack Crockford	Kim Fleming Terry Frame Nasie Gallagher Shari Gallup Todd Hartshorn	Chris Hiner Cheri Hottinger Diane LeMay, M.D. Jim Lenner Kim Lust	Nelson McCray, Ph.D. David Morrison Judy Pierce Richard Reed John Row	Donna Shipley Thomas Slater Ben Streby Charles Walker Ray Wilson
--	---	---	---	--

Fundraising

Licking Memorial Health Systems (LMHS) relies, in part, on charitable donations to proactively incorporate technological advances and meet growing community needs. The Development Department at Licking Memorial Hospital (LMH) works diligently to ensure that the Hospital has the funds available for continuous improvements. Contributions to LMHS are used to purchase equipment and to fund programs, capital expenses, and facility improvements. The contributions are not used for salaries or general operating expenses.



Golden Corporate Honor Roll
First Federal Savings

Community Cornerstone Club – The Community Cornerstone Club is comprised of individuals, couples and businesses who contribute \$100 or more to Licking Memorial Health Foundation (LMHF). As of 2014, the Cornerstone Club has 174 members who have raised \$26,150 toward the 2014 CBORD Project. Donors receive a Main Street Collection recognition piece at each \$500 milestone of giving. The 2014 addition to the Main Street Collection recognizes donors who have reached the \$8,000 level of giving. The new piece is a likeness of the Betsy Eaton O’Neill Health Resource Center, which was made possible through a generous gift provided by the family of Jack and Betsy O’Neill. The Betsy Eaton O’Neill Health Resource Center serves as a memorial to Betsy, whose career as a nurse and passion for continuing education were its inspiration.

The Caduceus Society – Physicians have their own opportunities to lend financial support through The Caduceus Society, which is a prestigious giving level for physicians who pledge a gift of \$10,000 or more over a period of 10 years. New members in 2014 included two anonymous donors, Ann V. Govier, M.D., Drs. Aruna and Chandre Gowda, Laurie Schaeffer, D.O., and Katrina Timson, M.D. The Caduceus Society has a total of 75 members.

The William Schaffner Society – The William Schaffner Society gained six members in 2014, and now has a total of 113 members. The William Schaffner Society was created in memory of William Schaffner, the first chairman of the Licking County Hospital Commission. Members pledge at least \$10,000 over 10 years. Those who joined in 2014 are: Beth and Jim Atkinson, Tim and Rae Carbaugh, Lynda L. and W. Todd Hoffman, Bob and Joan Kent, Fred Pryor – In memory of Roberta Pryor, and Elizabeth and Russell Suskind.



The John Alford Fellowship
Orville Varasso – In Loving Memory of Violetta B. Varasso



Golden Corporate Honor Roll – The Golden Corporate Honor Roll distinguishes companies which have made a total commitment of \$10,000 or more to LMH. Participation in this program signifies the company’s alliance with the Hospital to ensure the continuation of excellent healthcare services. The Golden Corporate Honor Roll gained three members in 2014, including First Federal Savings, Holtz Industries, Inc., and Southgate Corporation.

The John Alford Fellowship – The John Alford Fellowship gained one member in 2014 – Orville Varasso, in loving memory of Violetta B. Varasso – and now has a total of 31 members. The John Alford Fellowship was created to memorialize the extraordinary commitment of LMH’s long-time supporter, John W. Alford. Members pledge \$25,000 to \$49,999 over 10 years.

Platinum Circle – The Platinum Circle is reserved for LMHF’s business and corporate donors who have contributed \$25,000 to \$49,999. These gifts enable LMH to purchase new equipment and provide additional services to meet the healthcare needs of the residents of Licking County. Capital Wholesale Drug Company and Robertson Construction Services, Inc., joined the Platinum Circle in 2014.

Benefactor Level – Benefactors are special friends of LMHS, both individuals and businesses, who support the LMHS mission to improve the health of the community by donating between \$50,000 and \$100,000. LMHF has 10 Benefactor Level contributors.

Founder Level – Founder Level members are altruistic individuals who have made outstanding contributions to LMHF by providing gifts of \$100,000 or more. LMHF is fortunate to have 16 Founder Level memberships. ArmorSource LLC became a Founder Level donor in 2014.

Licking Memorial Golf Gala – The annual Licking Memorial Golf Gala took place at the Granville Golf Course on June 23, with Angie and Walt Greenfield serving as honorary chairs. The team from Frontier Home Remodeling, whose members included Tom Branham, Robert Justice, Phil Pack and Jack Trenish, took first place in the tournament. John Hinderer Honda, Matesich Distributing, MedBen, Park National Bank, and Stedman Flooring, Inc., were Ace Sponsors with a contribution of \$5,000 each. Eagle Sponsors (\$2,500) included CS Construction, The Energy Cooperative, Gutridge Plumbing, Inc., Interim Healthcare of Newark, The Jerry McClain Companies, Limbach Company, LLC, Newark Advocate Media, SmartBill, Ltd., Summit Custom Cabinets, Surgical Interventions, LLC, US Foods, Inc., and WCLT Radio. A total of 135 golfers played in the 2014 Golf Gala, which raised funds to benefit the 2014 Radiology Initiative.

PRIDE – LMHS employees have a special opportunity to support the Health Systems with charitable contributions through payroll deductions to PRIDE (Providing Resources in Dedicated Employees). As of December 2014, PRIDE had 690 members. Since 1987, PRIDE contributions have raised more than \$2.1 million.

Paving Our Future Commemorative Bricks – LMH’s Development Council offers a distinctive way to recognize family members, friends or organizations with commemorative bricks. The bricks are available in two sizes for personalization and placement in one of LMH’s exterior walkways. In 2014, six commemorative bricks were purchased and placed on the grounds.

Honorary and Memorial Giving Program – Many community members appreciate the opportunity to pay tribute to a loved one, commemorate a special event or celebrate a recovery through monetary contributions that benefit LMH. In 2014, LMHF received two honorary and 53 memorial donations. In addition, 34 contributors made Doctors’ Day donations to honor their physicians.



Platinum Circle
Capital Wholesale Drug Company

Employment

Licking Memorial Health Systems (LMHS) has provided employment opportunities for Licking County residents for more than 100 years. Not only is LMHS the largest employer in Licking County, but it also has established a reputation as the leading healthcare provider in the community. This distinction is largely due to the dedication of the Health Systems' 1,800-plus employees who serve diligently to provide quality care for patients and visitors.

LMHS has high standards for its employees and believes in recognizing and rewarding their accomplishments through various celebrations, including monthly Dining with the Stars recognition breakfasts and luncheons, bimonthly employee birthday events and annual recognition dinners. LMHS also offers a comprehensive benefits package that includes tuition assistance, free uniforms, and free access to various wellness center sites, as well as excellent health, dental and vision insurance.

Hospital & Healthcare Week – The annual celebration featured a health fair to provide employees with information to enhance their own health. LMHS also hosted an outdoor employee cookout and announced special employee recognition awards throughout the week, including the Clarissa Ann Howard Nursing Award for Clinical Excellence, MVP Awards and the Manager of the Year Award.

National Doctors' Day – In honor of National Doctors' Day, LMHS organized several events to show appreciation to the Licking Memorial Hospital (LMH) Medical Staff. Physicians were treated to an honorary breakfast, complimentary massages and a gourmet lunch in appreciation for their dedication to the community.

Employee Recognition Dinner – During the Employee Recognition Dinner at Longaberger Golf Club in May, 204 LMHS employees were recognized for their dedicated service in 5-year increments, including seven employees celebrating 40 years of service and one employee celebrating 45 years.

LMHS Again Recognized as “Healthiest Employer” – Columbus Business First recognized LMHS as a “Healthiest Employer” for the second consecutive year. The Healthiest Employers in Central Ohio recognition was developed as a way to recognize and promote wellness in the workplace throughout Central Ohio.

LMH Receives OHA Award for Workplace Safety – The Ohio Hospital Association (OHA) recognized LMH for its superior record of employee safety. The study included safety records of 95 hospitals in Ohio and identified those with excellent safety programs and the lowest rates of job-related illnesses and injuries.

Medical Staff Recognition Dinner – The recipient of the LMH Physician of the Year Award, Brent M. Savage, M.D., was announced in October at the dinner, which takes place annually to honor physicians who provide dedicated care to the community.



Employee Cookout



Community Supported Agriculture and LMHS Garden – Throughout the growing season, LMHS worked with Bird’s Haven Farms to make a Community Supported Agriculture (CSA) program available to employees of the Health Systems. CSA is a great way to buy local, seasonal produce directly from the farmer.

LMHS employees also planted a summer garden on the Health Systems’ lot on Dickerson Avenue, across from Hospital Drive. It supplied fresh produce to the LMH Café and patient meal service, and a portion of the garden was reserved for employees who participated in growing their own fresh produce.

RN to BSN Program Announced – LMHS was pleased to announce the establishment of a program that supports the national nursing goal to increase the percentage of baccalaureate-prepared nurses in the workforce to 80 percent by 2020. In order to help reach this goal, along with the Health Systems’ desire to continue providing outstanding care to patients, LMHS is offering additional tuition assistance to all registered nurses, currently working in a nursing capacity and pursuing their Bachelor of Science in Nursing (BSN) degrees.

Retiree Dinner and Luncheons – In 2014, retired LMHS employees were invited to two Retiree Luncheons at the DoubleTree by Hilton Hotel in downtown Newark, in addition to the 18th Annual Retiree Dinner in the LMH Café. More than 110 LMHS retirees gathered at the Dinner on July 10 to reconnect with former coworkers and to learn about recent developments within the Health Systems.

38th Annual Holiday Party – Employees were invited to a complimentary meal of delicious holiday favorites prepared by LMH’s own Food Service staff.

116 Years of Caring at LMHS – In January 2014, employees celebrated 116 years of providing quality health care to the community with an annual interdepartmental competition to collect new blankets and outerwear. Health Systems employees provided a record total of 2,042.9 pounds of contributions that included \$8,575.60 in monetary donations. The gifts were donated to The Center for New Beginnings and the Salvation Army of Licking County to help individuals and families in need. Additionally, LMHS employees participated in the Licking County United Way Campaign, and were named top contributors to the Food Pantry Network of Licking County’s Operation Feed Campaign.



TWIGS

The TWIGS (Togetherness, Willingness, Imagination, Giving, and Sharing) Organization of Licking Memorial Hospital (LMH) raises funds for LMH year-round with special events, sales, the TWIGS 8 Gift Shop at LMH, and the TWIGS 6 Granville Thrift Shop on Tamarack Road. To date, the TWIGS organization has raised more than \$4.9 million toward equipment needs and capital purchases at LMH. In 2014, TWIGS contributed \$138,668.00 to the Hospital.

TWIGS first formed in 1950 to support the Hospital. There currently are four LMH TWIGS chapters around Licking County. The chairmen of the individual LMH TWIGS chapters are: Leah Liebson – TWIGS 6, Paisley Boyer – TWIGS 8, Darlene Baker – TWIGS 14, and Krista Price-Brooks – TWIGS 24. The LMH TWIGS Executive Board members are: Sharon Wiley – Secretary (left), Steve Schlicher – Chairman (center), Darlene Baker – Treasurer (right), and Linda Prior – Vice Chairman (not pictured).



Volunteers

LMH is fortunate to have the support of a large group of dedicated volunteers. In 2014, 112 Volunteers donated 38,842 hours of their time to perform many tasks that range from delivering mail and greeting cards to assisting with patient transporting. The Volunteer Executive Board officers are (pictured left to right): Joan Omlor – President, Gary Hamilton – Vice President, Cindy Kikeli – Recording Secretary, and Joanne Hanson – Corresponding Secretary.

- | | | | | |
|-----------------|---------------------|----------------------|--------------------|------------------|
| Janet Anderson | Cynthia Sue Donnard | Harry Harper | Polly Mitchen | Mary Alice Swank |
| Janice Banks | Richard Donnard | Connie Helms | Robert (Bob) Moody | Mary Tebben |
| Mike Barker | Delores Dovjak | Marjorie Hensley | Arlene Newman | Laura Tidball |
| Becki Becker | Ann Englefield | Denise Hess | Warren Noblick | Brenda Tompkins |
| Judith Binckley | Jim Estep | David L. Hiatt | Helen Norris | Taryn Walker |
| Maxine Binckley | Pat Farley | Hope Hindel | Margaret Oakleaf | Joann Walton |
| Sheryl Bindley | Linda Farley | Carol Sue Hopper | Helen Ogles | Diane Weaver |
| David Brenner | Vickie J. Fogarty | Clarissa Ann Howard | Joan Omlor | Sue Weiland |
| Bob Brooker | Janet Friel | Diana Hufford | Ralph Ottensmeier | Patrick Wesley |
| Lori Brown | Christine Fulton | Robert Kaczor | Rhea Philipps | Naomi Wilder |
| Bill Butler | Robert Gabe | Maxine Keith | Mary Lou Place | Connie Williams |
| Philip Cassone | Marie Gartner | Cindy Kikeli | Susan Schlicher | Wanda Wilson |
| Joyce Clemings | Connie Gelfer | Myrtle Kovach | Zach Schmidt | Sue Wiseman |
| Carolyn Cline | Elinore Giles | Anita Lafferty | Patricia Shipp | Sue Wolfe |
| Eddie Cline | Nancy Greten | Glenna Lambert | Alan Smith | Patricia Wysocki |
| Linda Cochran | Lois Grimm | Dolly Landrum | Audrey Snow | Roger Yekisa |
| Ruth Coen | Andrew Groff | Thomas Le Blanc | Mary Stewart | Carol Yost |
| Janet Cook | Rosemary Grube | Arleen Leatham | Nancy Stewart | Marilyn Yost |
| Carole Corbin | Rebecca Guinsler | Connie S. Levingston | Richard Stewart | Gracie Young |
| Shirley Cotton | Rene Halblaub | Carole V. Link | Denny Stewart | |
| Sue Courson | Gary Hamilton | Mary Lucas | Susan Stone | |
| Jenifer Dennis | Karen Jo Hamilton | Thelma McCurdy | Pam Sturm | |
| Cecilia Doll | Joanne Hanson | Betty Meyer | Renata Sucha | |



Facts at a Glance

2014 Statistics

Auxiliaries

Volunteers/TWIGS (hours):	38,842
TWIGS (dollars):	\$138,668
Development (dollars):	\$662,340

Charity and Uncompensated Care

In 2014, Licking Memorial Health Systems (LMHS) provided \$29.9* million in uncompensated care at standard charges, of which \$7.1* million was charity care.

LMHS has provided more than \$450* million in uncompensated care at standard charges since 1995, the year that the Licking Memorial Health Professionals was formed.

The total cost of uncompensated care to LMHS in 2014 was \$14.0* million. The total cost of uncompensated care since 1995 has been \$217* million.

Licking Memorial Hospital Statistics

Total registered beds:	227
Coronary:	25
Intensive Care:	13
Medical/Surgical:	121
Obstetric:	18
Psychiatric:	9
Nursery:	28
Acute Inpatient Rehab:	8
Chemical dependency:	5
Admissions:	9,157
Average daily census (includes observation):	93
Average stay (days):	3.20
Emergency Department visits:	56,482
Patient days:	29,687
Patient meals served:	90,738
Babies delivered:	1,137
Laboratory tests:	756,256
Pharmacy units:	3,722,151

Pounds of laundry:	2,244,742
Urgent Care visits:	26,573
Radiology procedures:	112,341
Radiology, ultrasound:	14,179
Radiology, CT scans:	20,479
Radiology, MRI scans:	4,932
Rehabilitation, Occupational Therapy procedures:	8,848
Rehabilitation, Physical Therapy procedures:	43,441
Surgical procedures:	7,781
Inpatient:	1,762
Outpatient:	6,019
Medical Staff (Active):	161
Medical Staff (Consultants):	49
Full-time equivalent employees:	1,268
Salaries / benefits:	\$82,860,488*
Operating expenses:	\$151,086,007*

Licking Memorial Hospital provided \$25.3* million in uncompensated care at standard charges, including charity, during 2014.

Licking Memorial Health Professionals Statistics

Number of physician practices:	41
Number of physicians:	100
Physician practice patient encounters:	356,589
Average companies served per month by Company Care:	248
Full-time equivalent employees:	370
Salaries / benefits:	\$48,424,898*
Operating expenses:	\$59,188,042*

Licking Memorial Health Professionals provided \$4.6* million in uncompensated care at standard charges, including charity, during 2014.

*Unaudited

2014 Donors

Many of our gracious community members choose to honor friends, family members or physicians on special occasions with a monetary gift to Licking Memorial Health Foundation. Others remember loved ones with memorial contributions. All donations that benefit Licking Memorial Hospital (LMH) are appreciated. Every contribution, whether large or small, makes a difference, and all gifts are tax-deductible to the extent of the law. Donors may restrict their gifts to a specific program or service. Donations also can be allocated to the general account, allowing Licking Memorial Health Systems to use the gift for the most urgent need. To make a gift or support one of the Health Systems' programs, please contact Veronica Link, Vice President Development & Public Relations, at (740) 348-4101.

(D) denotes deceased

Founder

(\$100,000-plus)

ArmorSource LLC

In memory of Lawrence J. Dickson

Mary E. Babcock (D)

Helen Marie Brooke (D)

Michael and Barbara Cantlin

In memory of John and Mary Alford

Howard E. LeFevre (D)

Licking County Foundation

The Lindorf Family Foundation

Amy and Jim Matesich

In loving memory of Rod Callander

Jerry and Debbie McClain

Bill and Jane (D) McConnell

The Family of Jack and Betsy O'Neill

PRIDE LMHS Employees

Frederick R. Reese (D)

Mr. and Mrs. J. Gilbert Reese

Dr. Albert K. Ridout

In memory of Ruth M. Ridout

TWIGS

Benefactor

(\$50,000-\$99,999)

Corporations

Harry C. Moores Foundation

Park National Bank

State Farm Insurance Companies

Foundation

The Twentieth Century Club

Individuals

Eli Hull (D)

James J. and Christine L. McGee

Robert & Lauren Montagnese

Carol C. Schaffner (D)

Timothy and Deborah Young

The John Alford Fellowship

(\$25,000-\$49,999)

Glenn & Alice Ann Abel

Ronald B. and Tracy W. Alford

William J. and Margaret M. Andrews

Mark and Leslee Arthur

Gary and Carol Barnes

Craig and Karen Cairns

Michael and Barbara Cantlin

Diane and Dan DeLawder

Doug and Bev Donaldson

Dr. and Mrs. Gerald Ehrsam

John and Mary Hinderer

Shari Hively

Elizabeth Huffman (D)

Drs. Jacqueline and Eugene Jones

Diane M. LeMay, M.D.

Veronica Link

Bill and Jane (D) McConnell

T. Thomas Mills, M.D.

Dr. Mark and Cathy Mitchell

Dr. Peter and Mrs. Jeannine Nock

Dick (D) and Dorothy Oberfield

Stuart and Marcia Parsons

John and Anne Peterson

Cyril (D) and Barbara Ransopher

Mr. and Mrs. J. Gilbert Reese

Lorei Frame Reinhard

Susan & Stephen Schlicher

Sylvia J. Sinsabaugh (D)

Jeff and Nancy Smith

In loving memory of Violetta B. Varasso

By Orville Varasso

John H. and Sarah R. Wallace

Cindy and Thaddeus Webster

Platinum Circle

(\$25,000-\$49,999)

Aladdin Shriners' Hospital Association
for Children, Inc.

Bank One

Capital Wholesale Drug Company

Gutridge Plumbing, Inc.

National City Bank

Nationwide Insurance Foundation

Owens Corning

Park National Bank

Robertson Construction Services, Inc.

State Farm Companies Foundation

Golden Corporate Honor Roll

(\$10,000-\$24,999)

Alltel Ohio

Elford, Inc.

The Energy Cooperative

Fifth Third Foundation

First Federal Savings

Greenfield/Lewis Investment Counsel

Holtz Industries, Inc.

Independent Insurance Agents of Licking

County

Kaiser Aluminum

Packaging Corporation of America

Southgate Corporation

Summit Custom Cabinets

Tamarack Farms Dairy

Waste Away Systems

The Caduceus Society

(*denotes commitment of at least \$10,000)

* Dr. (D) and Mrs. Don Adams

* Dr. George (D) and Sandy Andrews

* Anonymous

* Anonymous

* Anonymous

* Anonymous

* Anonymous

* Dr. Charles S. Baldwin (D)

* Dr. Richard and Jane Baltisberger

* Audrey K. Bennett, M.D.

* Michael Bulas, M.D.

* Khanh V. Dang, M.D.

* Dr. Janae Davis and Family

* Dr. Maria Defante and Dr. Brad Lewis

* Pete L. A. Dils, M.D.

* Lori J. Elwood, M.D.

* Dr. and Mrs. Joseph E. Fondriest

* Carl M. Frye, M.D. (D)

* Timothy R. Gatens, M.D.

* Dr. Shelley A. M. Gittens

and Mr. Richard Collins

* Jaime T. Goodman, M.D.

and Mr. Bernard W. Schubach

* Ann V. Govier, M.D.

* Drs. Aruna and Chandre Gowda

* Dr. Talya Greathouse-Cain

and Mr. Malcolm Cain

* Drs. Thomas and Mary Beth Hall

Chung Hee Han, M.D.

* Debbie Heldman, M.D.

Sheila Hodgson, M.D.

John W. Houser, M.D.

* Dr. Tiffany and Mr. Brian Inglis

Dr. Donald G. and Patsy Jones

* Dr. Robert R. Kamps and Susan E. Kamps

Frederick N. Karaffa, M.D. (D)

* Dr. and Mrs. Harold E. Kelch

Yoon H. Kim, M.D.

* Yoon S. Kim, M.D.

* Dr. and Mrs. Chang Sup Lee

Owen and Elizabeth Lee

* Dr. Todd F. Lemmon

R. Gilbert Mannino, M.D. (D)

* Dr. Chuck and Kathy Marty

* May and Val Mbah

Timothy J. McNeish, Ph.D.

* Mr. Kevin and Dr. Megan Miller

Young S. Moon, M.D.

* Dr. Bryce and Ellen (D) Morrice

* Ghulam Mujtaba, M.D.

* Jill Nicholson, M.D.

* Eric R. Pacht, M.D.

* Sarah & KW Tim Park, M.D.

Seung H. Park, M.D.

* Kenneth C. Parker, M.D., and Family

Carl L. Petersilge, M.D. (D)

Dr. and Mrs. John D. Quimjian

* Mr. Gregory and Dr. May-Lee Robertson

Claude Rousseau, M.D.

* Brent Savage, M.D.

* Laurie Schaeffer, D.O.

* Dr. Mary Jane and Richard L. Scott

Paul B. Simmons, M.D.

* Dr. Richard and Sandy Simon

Charles F. Sinsabaugh, M.D. (D)

* Dr. Donald R. and Martha M. Sperry (D)

* William A. Stallworth, M.D.

* Dr. (D) and Mrs. Edward J. Starinchak

* Suellywn Stewart, M.D.

* Dr. David and Pamela Subler

* Dr. and Mrs. C. Michael Thorne

* Katrina Timson, M.D.

* Forest and Obiaghanwa Ugbana

* Drs. Latha and Jagadish Urs

Patty Ayn Whisman, M.D.

* Linda Yu, D.O.

The William Schaffner Society

(\$10,000)

Mary M. Albright

John W. Alford (D)

Rita J. Allen

Anonymous

Sallie and Tim Arnett

Beth and Jim Atkinson

Mr. and Mrs. John A. Bakos

Dr. and Mrs. Robert A. Barnes

Robert C. Battat (D)

In memory of Jean Battat

John and Amy Bowyer

In loving memory of Lisa & Laura Willey

By Kathy & Tom Bradley

Gene and Mary Jo Branstool

Keith and Heather Burkhart

Betty Jane Koontz Burson (D)

Jan and Larry Campbell

In memory of Tim and Kenny Campbell

By Bruce Campbell

Tim and Rae Carbaugh

Mr. & Mrs. Jack Crockford

Mr. and Mrs. Harold L. Cromer (D)

Thomas and Kathryn Cummsiskey

Don and Janet Curtis

Jay (D) and Linda Dalgarn

Jerame and Bernadette Davies

Cindy and Terry Davis

Raymond P. Devereaux (D)

Nancy Chiles Dix

Mr. & Mrs. (D) Dean C. Edie

The Bowerston Shale Co.

Jerry G. and Barbara J. Feyh

John D. and Marcia Fisher

Lois (Sam) Folk

Claire L. Gant

John and Elaine Gard

Shannon Garten

Paul and Kathleen Gatens (D)

Walter C. Gemmill

Walter R. and Angie T. Greenfield

Harold J. and Nancy G. Greten

Patrick and Carol Guanciaale

Larry (D) and Kathryn Hahn

Diana and John Hall

Joan and Earl Hawkins

Robert Flory Hendricks

Mr. (D) and Mrs. Bennie E. Hill
 John & Lynn Hinderer
 Lynda L. and W. Todd Hoffman
 Clarissa Ann Howard
 Donald E. and Jennifer L. Hughes
 Lew Huston and Family
 Pat and Linda Jeffries
 Shirley Johnson
 Todd and Tammy Johnson
 Bob and Joan Kent
 Mr. and Mrs. Howard E. LeFevre (D)
 Paul Link
 Mr. (D) and Mrs. Robert Luikart
 Edward & Rhonda Maddern
 Bonnie Manning
 Geraldine D. Marston
 Debra L. Matesich
 Mr. & Mrs. Edgar W. McCauley
 Jerry McClain
 Mrs. William G. McCreery
 Mary Jane McDonald
 Robert H. and Patricia E. McGaughy
 Phoebe and Joe McMahon (D)
 Suzanne L. McPeck
 Mr. and Mrs. Christopher Meyer
 Sheila and Ron Miller
 Bill E. Mitchell
 Jan and Lew Mollica
 William S. (D) and Sue O. Moore
 In loving memory of Jesse Siler Elliot, Jr.
 and Richard Howell Morgan
 By Beth Ann Elliott Morgan (D)
 Janine and Brian Mortellaro
 Tom and Ann Mullady
 Frank B. Murphy
 Dr. Jack L. and Nancy G. Neely
 Mr. and Mrs. John J. O'Neill (D)
 Robert & Alexa O'Neill
 Lois and Burt Pharis (D)
 Robin and Judith Pierce
 Dorothy and Robert Pricer (D)
 In memory of Roberta Pryor
 By James F. Pryor
 Richard P. Reed
 Mary B. Reid
 Mr. (D) and Mrs. Calvin E. Roebuck
 Marian S. Rogers (D)
 Denny T. and Patricia L. Ross
 Carol C. Schaffner (D)
 Angel Schneider Wilson
 Dr. Joseph P. Shai, II (D)
 Mr. (D) and Mrs. Guy Sitler
 Jason and Holly Slaughter
 Aletha and Norman Sleight (D)
 Helen Wells Smith (D)
 Mrs. John D. Spencer (D)
 Sheryl and Jack Stickrad, Jr.
 Mr. and Mrs. George J. Still, Jr.
 Zenaide Schaffner Still and Sons
 Elizabeth and Russell Suskind
 William (D) and Mary Alice Swank
 Joan and David Trautman

Trinity Health Group
 Mr. (D) and Mrs. Richard L. Vockel
 Vicky L. Walbright, R.N.
 Mr. and Mrs. Gregory Wallis
 Mr. and Mrs. John L. Warner (D)
 Robert K. and Marilou Weakley (D)
 In loving memory of Kathy J. Wenzelberger
 By Richard Wenzelberger
 Gordon Wilken
 Wilber W. Wilson
 James T. Young
 Lee & Judy Zazworsky

**The LMH Cornerstone Club
 is a very special group of
 people who support the
 Hospital with a minimum
 donation of \$100 each year.**

Tony and Rita Adams
 Anonymous
 Lowell and Barbara Anstine
 Ray Barber
 Julie Ketner Barrett
 Patricia Bates-Woods
 Susan Bentz
 Thomas A. Brannon, O.D.
 John and Dorothy Brown
 Jim and Linda Brucker
 Ryan Bubb
 Budget Blinds of Mid Ohio
 Mike and Jan Buskirk
 John Byrnes, Highwater Sales
 & Marketing
 Elizabeth Caldwell
 Thomas and Margaret Caw
 Mark and Marsha Clark
 Eddie and Carolyn Cline
 Al and Judy Clovis
 Siobhan and Charles Clovis
 Mr. Edward Cobb
 Seth and Summer Conley
 Jim and Julie (D) Cooper
 F. Costaschuk
 Shirley A. Cotton
 Jeff and Jane Cox
 Cheryl and Andy Crawford
 Buck and Mary J. Crawmer
 Bob and Nancy Crist
 Jack and Bev Crockford
 Tom Cumiskey
 Barbara Cunningham
 Eschol and Dorothy Curl
 John and Carol Denison
 David and Vivian Dernberger
 Jonathan and Marcia Downes
 Steve and Cathy Ehret
 Dan and Peggy Evans
 Tom and Meghan Fairall
 Kim Fleming
 Stephen H. Fowler
 Reed and Mel Fraley

Terry K. and Terrie L. Frame
 Ms. Judith A. Franklin
 Douglas J. Freeman / MedBen
 David and Pamela Froelich
 Ann and Dick Fryman
 Nasie Gallagher
 John and Elaine Gard
 Ms. Beverly K. Geiger
 Elliott and Barbara Gerber
 Wade and Jill A. Gillespie
 Douglas and Diane Gordon
 Mr. and Mrs. John Grayson
 Mr. and Mrs. Theodore D. Griley, II
 Andrew and Jill Guanciale
 Dan Guanciale
 Jeff and Helen Hall
 Les Hallisy
 Dorothy E. Hanlon
 David and Nancy Hardy
 Harry and Julie Harper
 Michael and Cheryl Harris
 Susan Henry-Mounts
 David Hile
 Bill and Mary Hoekstra
 Raymond and Trish Holtz
 Eriech and Karen Horvath
 James Hostetter
 Jay and Cheri Hottinger
 Clarissa Ann Howard
 Marsha and Jerry Hurt
 James and Angela Francis
 Jeffery W. James
 Ms. Shirley James
 Bill and Susan Jansheski
 Shirley A. Johnson
 Charles and Eleanor Johnston
 Rollin Jones (Machinist)
 Nicole and Anthony Judd
 Cindy S. Kikeli
 Rob and Jamie Klinger
 Mr. and Mrs. Willard Kuhlwein
 Brenda L. Kutan
 Ms. Dolly E. Landrum
 William and Virginia Lavelle
 Beth Lee
 Bill and Sue Leedale
 Christine Lindskog
 Dave and Mary Jo List
 Travis Londot
 Randy and Kim Lust
 Joyce L. Malainy, Ed.D.
 Mr. and Mrs. Donald Mandich
 William and Barbara Mann
 Dean W. Markle
 Mike and Pat Massaro
 Roger and Kathy McClain
 Nelson and Kathleen McCray
 Thelma McCurdy
 Gary and Martha McDonald
 Mary Jane McDonald
 Mike and Donita McFarland
 Robert and Patricia McGaughy

Matt and Alison Miller
 Philip J. Miller
 Jim and Polly Mitchen
 Mr. Chris Mooney
 Bob and Kathy Moore
 Brian and Jenny Morehead
 Martha J. Morrison
 Jim and Jean Murray
 Terry and Rev. Beverly Myers
 Jim and Jean Nealon
 Jerry S. and June Nethers
 Sy and Witt Nguyen
 Jack and Ann Oberfield
 Judy and Fred O'Dell
 Herb Odle
 Daniel and Joan Omlor
 Alexa Robinson-O'Neill & Robert O'Neill
 Owens Corning Science
 & Technology, L.L.C.
 Diane Paetz
 Brian and Sarah Palmer
 Annelle and Dave Porter
 Mary Jayne Pratt
 Calvin K. Prine
 Susan Reid
 Mr. James P. Riley
 Lynne Dolan Rotruck
 John Row
 Gary and Diane Ryan
 Skip and Carol Salome
 Larry and Penny Sargent
 Richard Saylor
 Mr. and Mrs. Edward Schilling
 Angie and Doug Schmidt
 Mr. and Mrs. Jack F. Schmidt, Jr.
 Cathy Grayson Schumaker
 Michele R. Scott
 Phil and Mary Fran Shannon
 Dave and Tickle Shull
 Tom and Joyce Slater
 Al and Jan Smith
 Rev. Charlie and Diana Smith
 Noble and Kathleen B. Snow
 Noble B. Snow (D)
 Cheryl and Charles Snyder
 Doris Ann Spriggs
 Frank and Dusty Stare
 C. Kelly Starr
 Joseph Stenson
 Jack Stickle
 Daniel R. Stricker, D.D.S.
 Richard and Darla Thompson
 Stacy Thompson
 Jennifer & Dick Utrevis
 Charles and Jane Walker
 Janet C. Walker
 Gary R. and Victoria Walters
 John and Barbara Weaver
 Denny and Carol Wheeler
 WHTH/WNKO Radio
 Sharon J. Wills
 Ramon and Joan Wilson

Jim and Ashley Winters
 David and Marlene Wolfe
 Robert and Sharon Wolfe
 Carol E. Wollenburg
 Rod and Pat Yost
 Craig Young
 Verna Zelein

Capital Improvements Donors

The TWIGS are the sole providers of these important funds. All of the profits from the TWIGS' numerous fund-raising activities exclusively benefit Licking Memorial Hospital. TWIGS stands for Togetherness, Willingness, Imagination, Giving and Sharing. The four active TWIGS are: TWIGS 6, TWIGS 8, TWIGS 13, TWIGS 24, and the TWIGS Directors of Corporation Board.

General and In-Kind Donations

Anonymous
 Anonymous
 Anonymous
 Anonymous
 Karen Arthur
 Geoffrey C. and Elaine R. Bobbitt
 Ms. Karen Butt
 Dr. and Mrs. Craig B. Cairns
 The Cato Corporation
 Mr. and Mrs. Ronald C. Crist
 Garfield Elementary School
 Mr. and Mrs. Jack Graham
 Susan Heckman
 James Hostetter
 Patricia Laskay
 Licking County Parkinson
 Support Group
 Robert and Patricia McGaughy
 Newark Area Club of Zonta
 International 704
 Ms. Amber Oliver
 Park National Bank
 Ms. Erin Parrill
 Larry and Penny Sargent
 Nancy Shonebarger
 Marvin and Terry Snow
 Spring Hills Baptist Church
 Janet C. Walker
 Ms. Sarah Carolyn Walsh
 WISE
 Ms. Susan Woods

Honorary and Memorial Gifts

Contributions in the name of a friend or relative also may be made to the Hospital. Individuals who have made a contribution are listed below the name of the person they have chosen to honor or remember.

Honorary Gifts

Richard Baltisberger, M.D.

By: Aaron Link
Ashley, Robby & Brady Montagnese

Garth Bennington, M.D.
By: Tim and Deb Young

Craig Cairns, M.D.
By: LMHS Senior Management

Deborah Coates, D.O.
By: Clarissa Ann Howard

Khanh V. Dang, M.D.
By: Linda Dalgarn

Elliot Davidoff, M.D.
By: Linda Dalgarn
Robert and Patricia McGaughy

Janae Davis, M.D.
By: Sandy Hanlon
Veronica Link
Sheila M. Miller
Lauren Montagnese

Lawrence Dils, M.D.
By: Gloria Hoover

Gerald Ehrsam, M.D.
By: Anonymous
Walt Gemmell
Pat Jeffries
Bill and Barb Mann
Rob and Lauren Montagnese

Jaime Goodman, M.D.
By: Linda Dalgarn

Ann V. Govier, M.D.
By: Linda Dalgarn
Robert and Patricia McGaughy
Sheila M. Miller
Cindy Webster

Kevin Graham, M.D.
By: John and Elaine Gard
Gloria Hoover

Talya Greathouse, M.D.
By: Cindy Webster

Angie and Walt Greenfield
By: Jack Gatlin

Earl Haley, M.D.
By: Jo Kaser

Debra Heldman, M.D.
By: Linda Dalgarn
Angie and Walt Greenfield

Daria Hopkins, M.D.
By: Sheila M. Miller
Ann Mullady

David Jackson, M.D.
By: Carolyn D. Wells

Jacqueline Jones, M.D.
By: Linda Dalgarn
Angie and Walt Greenfield
Richard Reed
Kim Swartz
Cindy Webster

Shakil Karim, D.O.
By: Cynthia L. Lovell
Cindy Webster

David Koontz, D.O.
By: Julie K. Barrett
Linda Dalgarn

Bassam Kret, M.D.
By: Cindy Webster

Owen Lee, M.D.
By: John and Elaine Gard

Diane LeMay, M.D.
By: Rob Montagnese

Licking Memorial Hospitalists
By: Wanda, Jack and Laura Allberry

Mark Mitchell, M.D.
By: Angie and Walt Greenfield
Drew Link
Veronica Link
Robert and Patricia McGaughy
James and Christine McGee
Anne Peterson
Cindy Webster

Ralph Napolitano, Jr., D.P.M.
By: Sheila M. Miller

Peter Nock, D.O.
By: Robert and Patricia McGaughy
Rob Montagnese

Ellen and Alex O'Neill
By: Skip and Connie Robinson

Eric Pacht, M.D.
By: Cindy Webster

Kenneth Parker, M.D.
By: Rob Montagnese
Nancy Volk

Hassan Rajjoub, M.D.
By: Ken and Laura Chapin
Ron Miller
Tom and Ann Mullady

Howard Reeves, D.O.
By: Angie and Walt Greenfield
Robert and Patricia McGaughy
Sheila M. Miller

May-Lee Robertson, D.O.
By: Rob Montagnese

M. Jane Scott, M.D.
By: Ron Miller

Andrew Seipel, M.D.
By: Ron Miller
Rob Montagnese
Cindy Webster
Jack Wilson

I-Tsyr Shaw, M.D.
By: Ron Miller

Richard Simon, M.D.
By: Dave and Tickie Shull
Carolyn D. Wells

Colleen Smith, M.D.
By: Charles West

Suelywn Stewart, M.D.
By: Mary J. Wehner

David Subler, M.D.
By: Clarissa Ann Howard
Sheila M. Miller

Vincent Walsh, D.O.
By: Tom Mullady

Patty Whisman, M.D.
By: Richard Reed

Alene Yeater, M.D.
By: Granville DAR Chapter

Memorial Gifts

Charles Sherman Baldwin, Jr.
By: Robert and Patricia McGaughy

Sister Bettina
By: Gary and Diane Ryan

Roger Clark
By: Michael and Janis Harvey

David L. Craig
By: Laura Atherton
Buck and Mary Crawmer
Jane Fisher
Newark Masonic Lodge #97
Silberline Manufacturing

Jay Dalgarn
By: Central Ohio Technical College
Veronica Link
Robert and Patricia McGaughy
Pataskala Area Chamber of
Commerce

Frederick N. Karaffa, M.D.
By: Harold and Carol Kelch

Nancy R. Lewis
By: Licking Memorial Hospital
Licking Memorial Hospital
Medical Staff

Grace Obert
By: Eric and Lisa Obert

John J. O'Neill
By: Corinne Ailes
Linda Ailes
Todd Ailes
Michael and Barbara Cantlin
C. Daniel and Diane DeLawder
Dublin Building Systems, Inc.
Daniel and Shirley Dupps
Bill and Janet Englefield
Dick and Ann Fryman
Kenneth and Jan Ishimine
Veronica Link
Mr. and Mrs. Douglas Liu
Mary Jane McDonald
McLain, Hill, Rugg & Associates
Mike and Cynthia Menzer
Sue Moore
NAIOP Central Ohio
Ohio Metal Technologies, Inc.
Park National Bank
Pataskala Area Chamber of
Commerce
Francesco and Yolanda Rosato
Sands Decker CPS, LLC
Mark and Rebecca Schillig
Shackelford Family Foundation
R. Michael and Linda Shannon
Lucy B. Shutt
Joseph and Sharon Sinsabaugh
Frances Starinchak
Strait & Lamp Lumber
Company, Inc.
John and Lynn Straker
Vorys, Sater, Seymour and Pease, LLP
Dr. John and Sarah Wallace
White Oak Partners, LLC
Xperion

John J. and Betsy O'Neill
By: Skip and Connie Robinson

Craig A. Parker
By: Patricia Parker

Andrew Poulson
By: Carmenceta R. Perkins

Guy Sitrler
By: Sandy Andrews

Joseph Snively
By: Robert and Patricia McGaughy

Edward J. Starinchak, M.D.
By: James H. Brandenburg, M.D.
Andrew and Amy Danylchak
Rosemary Danylchak
Rick and Kathleen Gummer
Jack V. Rozwadowski, M.D.

Jackie Underwood, M.D.
By: Kathleen Pitchford

Golf Gala 2014

Ace Sponsors (\$5,000)

John Hinderer Honda
Matesich Distributing Company
MedBen
Park National Bank
Stedman Floor Co., Inc.

Eagle Sponsors (\$2,500)

CS Construction Group, Ltd.
The Energy Cooperative
Gutridge Plumbing, Inc.
Interim Healthcare of Newark
The Jerry McClain Companies
Limbach Company, LLC
Newark Advocate Media
SmartBill, Ltd.
Summit Custom Cabinets
Surgical Interventions, LLC
US Foods, Inc.
WCLT Radio, Inc.

Birdie Sponsors (\$1,000)

Jim Barton & Associates, Inc.
Bricker & Eckler, LLP
Claypool Electric
General Graphics & Scott Peterson
Angie & Walt Greenfield
MedFlight
PNC Bank
Reese, Pyle, Drake & Meyer
Rotary Club of Newark
Scientific Instrument Center

Hole Sponsors (\$500)

Anomatic Corporation
APS Medical Billing
Baker & Hostetler, LLP
Barnes Advertising
Benchmark Bank
Capital Wholesale Drug Company
The Cawley Johnson Group, LLC
Cintas
ComDoc
Crowe Horwath, LLP
Dawson, Coleman, and Wallace Insurance
Dinsmore (Peck, Shaffer & Williams, LLP)
Jean and Joe Fondriest
Ann Howard
Kindred Transitional Care
and Rehabilitation
Mortellaro McDonald's
Mountjoy, Chilton, Medley

Nyhart
Ohio Cancer Research Associates
Quadax, Incorporated
Sanfillipo Produce Company, Inc.
SleepCare, Incorporated
ThyssenKrupp Elevator
Time Warner Cable Media
Welch Allyn
WHIZ Media Group

Cart Sponsors (\$250)

All Weather Systems
Dr. Thomas Beattie
Bill's Bush Hog Mowing
Budget Blinds of Mid Ohio
Cat's Meow Gifts, Home Décor,
& Replica Keepsakes
Central Ohio Technical College
Clean Innovations
Columbus Capital
Comprehensive Reimbursement, Inc.
Echo 24, Inc.
George Lynch Controls, Inc.
Globe Window Cleaning
The Guanciale Group
Heath Nursing Care Center
Heckman's Lawn Service
Home Instead Senior Care
Kendal at Granville
Kessler Sign Company
Lepi Enterprises
John, Linda & Tyler Lewis
Marsh
Mattingly Family Foundation
McLain, Hill, Rugg, & Associates, Inc.
Morgan Stanley
Northpoint Ohio Architecture
PressWorks
R & R Pipeline
Recharge It, Inc.
Red Vette Printing
Ross' Granville Market
Southgate Corporation
Standard Textile
Tectum, Inc.
Tuscany Gardens
Velvet Ice Cream
Waste Away Systems
Weiler Financial, Inc.
Willison Investment Strategies
Wince Welding Supply, Inc.
Zane State College

Development Council Donors

Glenn Abel
Mary M. Albright
Karen Burger
Jack Crockford
Kim Fleming
Stephen H. Fowler
Terry Frame
Shari Gallup

John Gard
Thomas Hall, M.D.
Sally Heckman
Don Hill
Chris Hiner
Cheri Hottinger
Clarissa Ann Howard
Pat Jeffries
Willard Kuhlwein
Kim Lust
Bonnie Manning
Mary Jane McDonald
Robert McGaughy
Eloise Miller
Tom Mullady
Stuart Parsons
John Row
David Shull
Tom Slater
Doris Ann Spriggs
Russell Suskind
Chuck Walker

Other Donors

A. Thomas Meats
Advance Auto – Heath
Advantage Fitness West
Al's Meat Market
Apple Valley Golf Course
Applebee's
Bella Balloons
Bellezza Salon & Day Spa
BonWorth
Buckeye Linen
Buckeye Winery
Burning Tree Golf Course
Mary Jane Carrier
Chapel Grove Inn
Cherry Valley Lodge
The Climbing Rose
Comfrey Corner
Courtyard by Marriott
Curves
Doubletree (Newark Metropolitan)
Dunkin's Diamonds
EagleSticks Golf Club
The Energy Cooperative
Fiberglas Federal Credit Union
First Federal Savings
Kim Fleming
Jennifer Gatlin
General Graphics
Goumas
Granville Golfand
Granville Lumber Company
H.I.S. Wellness Center
Hillcrest Golf Course
Hopewell Federal Credit Union
IHOP
Indian Mound Mall
Innovative Quality Solutions Company
Patrick Jeffries

Joe and Mimi's Pizza
John Hinderer Honda
Kendal of Granville
Kessler Sign Company
Kroger – Heath
Bill Kuhlwein
Kyber Run Golf Course
LaPaloma
Traci Lautenschleger, Thirty-One Gifts
Licking County Family YMCA
Veronica Link
Links at Echo Springs
Longaberger Golf Club
Longhorn Steakhouse
Lowe's Home Improvement
Maximum Fitness
MedFlight
Midas
Midland Theatre
Sheila and Ron Miller
Moe's Original Bar B Que
New Day Spa
Nutcracker Family Restaurant
Ohio Lottery, Columbus Region
Scott Peterson
Pizza Cottage
Pizza Hut – West Main Street
Raccoon International Golf Club
Red Oak Pub
Reflections
Rejuvenations Facial Aesthetic Clinic
Restoring Light Yoga
River Road Coffee
Rooster's
Roots and Shoots
Saint Albans Golf Club
Shayer Shah, D.D.S.
Spa on the Avenue
Table Rock Golf Club
Target
VO2 Fitness
Village Flower Basket
Wal-Mart – Newark
Westerville Golf Center
Wilson's Garden Center
Winterset Water, LLC
The Works
Wyandot Golf Course

Paving Our Future (Commemorative Bricks)

Beth Anderson
Lowell and Barbara Anstine
James and Beth Atkinson
Nancy E. Barber
Cathy Boykin
Tom and Kathy Bradley
Buckeye Linen Service
Chapel Grove Inn
Timothy Cline
Zelma Craig

Larry Crane
Bob and Nancy Crist
Jay (D) and Linda Dalgarn
Mr. and Mrs. C. Daniel DeLawder
Joan Dobson
Doug and Beverly Donaldson
Dynamix Engineering
The Energy Cooperative
Bruce Ford
Nasie Gallagher
Lauri Gayheart
Patricia Goddard
Eva Gore & Family
Jerry and Sandy Graft
Ronald and Margaret Graft
Jill and Andrew Guanciale
Patrick and Carol Guanciale
Marc and Connie Guthrie
Bonnie Hatch
John Hinderer
Mr. and Mrs. Ray H. Holtz
Hopewell Federal Credit Union
Miss Clarissa Ann Howard
Mr. and Mrs. Patrick Jeffries
Cindy Kikeli
Dr. Chung H. Koo
Mr. and Mrs. Willard Kuhlwein
Dr. Chang Sup Lee
Molly Lee
Vicki Lennon
Licking Rural Electrification
Limbach Company
Veronica Link
LMFP – Granville Staff
LMH Employees
LMHP Central Billing Office
Dean Markle
Mrs. Geraldine Marston
Debra Matesich
Matesich Distributing
Mathis Moving and Storage
Mary Ellen McArtor
The Jerry McClain Companies
Thelma McCurdy
Patricia and Robert McGaughy
David Meckley
Robert and Lauren Montagnese
Tom and Ann Mullady
Judy Nolette
Richard (D) and Dorothy Oberfield
Orthopaedic Specialists & Sports Medicine
Park National Bank
Stuart and Marcia Parsons
John and Anne Peterson
Judith and Robin Pierce
Marge Price
Jim and Jeanetta Pyle
Susan J. Reid
J. Gilbert Reese
Mrs. Geraldine Renard
Mavis Reynolds
Mr. and Mrs. James Riddel

Lydia Roebuck
Bill and Cheryl Rose
Richard Saylor
Mr. and Mrs. Stephen Schlicher
Mr. and Mrs. P. David Shull
Mr. and Mrs. Guy Sittler
Mrs. Doris Spriggs
State Auto Mutual
Kathleen & Ralph Swick
The Tittle Family: Larry, Jessica, Lawson,
Lawrence, Gabriella & Madelyn
David and Joan Trautman
TWIGS 8
Robert and Ashley Wade
Michael and Angela Wallace
Margaret Walters
Dr. John and Audrey Walther
John Wells, D.O.
Mr. Richard Wenzelberger
Martha Wilson
Deborah and Timothy Young
James T. Young
Mrs. Verna Zelein

PRIDE Donors

This special group of LMHS employees supports the Hospital financially every payday. As an integral part of the Development Council, PRIDE members join the community in supporting, building and maintaining an excellent healthcare organization.

♣Cornerstone Bronze
♠♠Cornerstone Silver
♠♠♠Cornerstone Gold
***The William Schaffner Society
****The Caduceus Society
*****The John Alford Fellowship
*****Benefactor

♠♠Brooke Abraham
♠Debra Adkins
♠♠Jeanna Alban
♠Beverly Alexander
♠♠Paula Alexander
♠Laura Allberry
♠Michele Allen
♠Rhonda Allen
***Rita Allen
♠Tricia Allen
♠Teresa Altier
♠Naa Ahiney Amartey
♠Cathleen Anderson
Glenn Anderson
♠Jamie Anderson
♠Lauren J. Anderson
♠♠Hollie Anderson-Mosser
♠Darin Andrews
♠Mike Andrews
♠Mary Annecillo
****Anonymous

****Anonymous
****Anonymous
♣Thomas Argyle
♣Timothy Argyle
***Sallie Arnett
♣Karen Arthur
*****Leslee Arthur
♣Kimberly Aston
♣Cheryl Athey
♣Amanda Baker
♣Cheryl Baker
♣Kathleen Baker
♣Kathryn Baldeschwiler
♣Leanne Ballard
****Richard Baltisberger, M.D.
♣Patricia Banks-Chester
♣Cynthia Barbour
♣Matthew Barclay
♣Keith Barcus
♣Vickie Bargo
♣Tiffany Barker
****Carol A. Barnes
♣Robin Barr
♣Misty Bashore
♣Barbara Bates
♣Melinda Bates
♣Susan Benner
****Audrey Bennett, M.D.
♣Chelsee Bennett
♣Helen Benson
♣Olivia Biggs
♣Tracy Biller
♣Amea Binning
♣Anna Birkmeyer
♣Charles Birtcher
♣Barbara Bodo
♣Ian Bolden
***John Bowyer
♣Dale Boyd
♣Stephanie Boyd
♣Terri Boyd
***Katherine Bradley
♣Shelly Bragg
♣Brianna Brandon
♣Londa Braunbeck
♣Trevor Breckenridge
♣Kevin Brest
♣Allison Broceus-Wells
♣Nicole Broseus
♣Austin Brown
♣Callie Brown
♣D. Roché Brown
♣J. Scott Brown
♣Benjamin Broyles
Jayne Bryan
♣Leah Bryant
♣Nasra Bube
♣Charles Buerkle
♣Christine Bunn
♣Darren Burgin
***Heather Burkhardt
♣Theresa Butler

****Craig Cairns, M.D.
***Bruce J. Campbell
♣Cory Campbell
♣Pamela Campbell
***Rae Carbaugh
♣Jeanette Carpenter
♣Pamela Carpenter
♣Michelle Carr
♣Corinne Carrington
♣Laura Carroll
♣Kristin Casebolt
♣Diann Caudill
♣Catherine Chancey
♣Susan Cheney
♣Jacqueline Chesterson
♣Lindsey Clark
Dave Claypool
♣Lisa Clippinger
♣Alison Cliver
♣Michael Cochran
♣Rhonda Cochran
♣Samantha Cochran
♣Lisa Colangelo
♣Diana Joy Coleman
♣Michael Coleman
♣Cody Collins
♣Leanne Collins
♣Maria Collins
♣Lori Compton
♣Deborah Conley
♣Laura Conley
♣Andrea Connell
♣Kendra Connell
♣Bobbi Cooper
♣James Cooper
♣Karen Cooperrider
♣Brenda Copeland
♣Bradley Copley
♣Jennifer Corson
♣Brenda Cost
♣Kounta Coulibaly
♣Lisa Coulter
♣John Cox
♣Melody Crader
♣Courtney Craig
♣Kathryn Craig
♣Roberta Craig
♣Emily Cramer
♣Julie Crandall
♣Linda Crothers-Hurst
♣Mindy Crouse
♣Amy Culver
♣Mary Ann Cummings
♣Laurel Cunningham
***Janet Curtis
♣Sharon Dalton
****Khanh V. Dang, M.D.
♣Linda Dannemiller, M.D.
♣Kimberly Darnes
♣Lisa Darr
Theresa Davidson
***Bernadette Davies

***Cindy M. Davis
****Janae Davis, M.D.
♣Kathleen Davis
♣Nancy C. Davis
****Maria Defante, M.D.
♣Amber Dehmann
♣Samantha del Portal
♣Felizardo Dela Cruz
♣Christine Deland-Bujdoso
♣Elaine Denman
♣Tiffany Denman
♣Elaine Dennis
♣Andrea Devito
♣Jenny Dickson
♣Lindsay Dietrich
****Pete L. A. Dils, M.D.
♣Natalie Dollmatsch
♣Connie Donaker
♣Ashley Doss
♣Sandra Doughman
♣Malissa Dovenbarger
♣Nell Duffy
♣Donna Dunlap
♣Angel Dunn
♣Ronda Dupler
♣Denise Duval
♣Paden Dyer
♣Mark Early
♣Laura Edelblute
****Gerald Ehersam, M.D.
♣Lori Elliott
****Lori Elwood, M.D.
♣Jeanne Emmons
♣Shyanne Estep
♣Bethany Evans
♣Jacqueline Evans
♣Kimberly Evans
♣Mabel Evans
♣Shelby Evans
Victoria Evans
♣Tara Faherty
♣Rachel Falbo
♣Susan Fantini
♣James Farmer
♣Devin Fazakas
♣Lori Feaster
♣Cierra Fifield
♣Ashley Finney
♣Laura Fischer
♣Robert M. Fish Jr.
***Marcia Fisher
♣Scott Fisher
♣Peter Fleming
***Lois (Sam) Folk
♣Cathy Ford
♣Keith Ford
♣Carolyn S. Forsythe
♣Leanne Fox
♣Kerrie Foxall
Charlotte Francis
♣Christy Francis
♣Patrick Frankart

♣Tonya Franks
♣Lindsay Freytag
♣Andrew Frick
♣Kimberly Frick
♣Kenneth Friel
♣Kalani Friend
♣Jan Futral
♣Jennifer Galbraith
♣Jennifer Galiher
♣Richard Gallagher
♣Ashley Gant
***Claire Gant
♣Gregory Gant
♣Darcie Gard
♣Sheryl Gardner
LaNita Garnack
♣Audrey Garove
♣Linda Garren
***Shannon Garten
♣Tabitha Gartner
♣Thomas Gassman
♣Robert Gastineau
♣Anna Gates
♣Deena Gay
♣Bonita Ghiloni
♣Tara Gibson
♣Sandra Gienger
♣Tiffany Gioffre
****Shelley A. M. Gittens, M.D.
♣Aubrey Glasser
♣Colin Gleek
♣Linda Godenschwager
♣Doree N. Good
♣Andrea Goodin
****Jaime T. Goodman, M.D.
♣Kimberly Goodwin
♣Charles B. Gordon
****Ann V. Govier, M.D.
****Aruna Gowda, M.D.
♣Dorothy Grady
♣Glenda J. Grady
♣Cindy Gray
****Talya Greathouse-Cain, M.D.
♣Mallory Grieb
♣Nancy Griebel
♣Patti Griffin
♣Jennifer Grower
♣Julie Guinta
♣Sandra Gundler
♣Lori A. Guy
♣Dominique Haggerty
***Diana L. Hall
♣Elizabeth Hall
♣Sarah Hall
♣Tina Handley
♣Hufza Hanif, M.D.
♣Sandra Hanlon
♣Julie Harper
♣Samantha Harper
♣Malcolm Harris
♣Mindy Harris
♣Rhonda Harris

♣Jamie Hartman
♣Jessica Hartshorn
♣Sherry Hatfield
♣Denise Haviland
♣Brittany Hayes
♣Lisa Hayes
Susan Hayman
♣Terri Hazlett
♣Laura Hazucha
♣Jerry Heddleson
♣Kimberly Heddleson
♣Angela Heeralal
♣Joan Hellyer
♣Jill Henry-English
♣Janet Hewitt
♣Carol Hickman
♣Norma Higgins
♣Marsha Hill
♣Rebecca (Sue) Hill
♣Stacey Hills
♣Samantha Hobbs
***Lynda L. Hoffman
♣Anne Hohman
♣Donna Holmes
♣Julia Holtz
♣Teresa Hoover
♣Daria Hopkins, M.D.
♣Heather Horsley
♣Brant Householder
♣Amy Howard
♣Serena Howard
♣Douglas Howe
♣Jennifer Huckabaa
♣Susan Huddy
♣Cynthia A. Hughes
***Donald E. Hughes
***Jennifer Hughes
♣Lavondra (Sue) Hunkins
♣Annie Hunt
♣Summer Hunt
♣Beth Hunter-Hannah
♣Shannon Huntsman
♣Desiree Hupp
♣Tracy Hurlow
****Tiffany Inglis, M.D.
♣Nichole Irving
♣Christine Jahn
♣Carrie Jarvis
♣Tammy Jenkins
♣Tyne Jenkins
♣Amber Johnson
♣Bryan Johnson
♣Kristine Johnson
♣Mary L. Johnson
♣Michelle Johnson
***Tammy Johnson
***Todd Johnson
♣Carol Jonard
♣Annie Jones
♣Beverly Jones
****Jacqueline J. Jones, M.D.
♣Julie Jordan

♣♣♣Asegid Kebede, M.D.
 ♣Christopher B. Keck
 ♣Lauren Keener
 Cathy Kellner
 ♣Joey Kennedy
 ♣Nicole Kidd
 ♣Joetta Kiger
 ♣Arley Kimble
 ♣Elizabeth King
 ♣Gwen King
 ♣Johanna King
 ♣Stacy King
 ♣Oren Kinney
 ♣Starlene Kinser
 ♣Amy Kirk
 ♣Mary Klark
 ♣Marilyn Klingler
 ♣Teresa Knicely
 ♣Laura Kocher
 ♣♣♣Jeffrey Kovalik
 ♣Tim Kovreg
 ♣Matthew Kruse
 ♣Lindsay Lachowsky
 ♣Stacie Lahna
 ♣Douglas Lake
 ♣Jennifer Lake
 ♣Lauren Lake
 ♣Cynthia Land
 ♣Rebecca Lannan
 ♣Danielle Lasure
 ♣Laura Laughlin
 ♣Desden Launder
 ♣Traci Lautenschleger
 ♣♣Melissa Lauvray
 ♣Judith Lefever
 ♣Eric Leighton
 *****Diane LeMay, M.D.
 *****Todd Lemmon, M.D.
 Vickie Lemmon
 *****Bradley Lewis, M.D.
 ♣Teresa Lewis
 ♣♣Andrew Link
 *****Veronica Link
 ♣Ashley Loescher
 ♣♣Melissa Lohri
 ♣Peggy Lombardo
 ♣Loretta Long
 ♣♣Terri Lopresti
 ♣Aaron Lothes
 ♣Abigail Loughman
 ♣♣♣Cynthia Lovell
 ♣Lori Lowery
 ♣Debra Ann Lyday
 ♣Kathy Lymas
 ♣Camille R. Mack
 ♣Jamie Macy
 ♣Stephanie Maddux
 ♣Kate Maher
 ♣Sue Maier
 ♣Ruth Mann
 ♣♣Lisa Marinacci
 ♣Pamela Markert

*****Charles Marty, M.D.
 ♣Renee Mason
 ♣Kimberly Mathis
 ♣Tonya Matlock-Anderson
 ♣Denise Matthews
 ♣Ashley Matz
 ♣Brad May
 ♣Roxann Maynard
 ♣♣Lucinda Mays
 ♣Gwen King
 *****May Mbah, M.D.
 ♣Jennifer McCann
 ♣Kathleen McCarthy
 ♣Lori McCollum
 ♣Stacy McConnell
 ♣♣Teresa McConnell
 ♣Kelly McCord
 ♣Scott McElhiney
 *****Christine McGee
 ♣Lylea McGuire
 ♣Andrea McInturff
 ♣Shannon McKee
 ♣Philip McLellan
 ♣Melissa McMillan
 ♣♣Vicki McNaughton
 ♣Chester McNemar
 ***Suzanne McPeek
 ♣Carrie McPherson
 ♣Dustin Meadows
 ♣Linda Megale
 ♣Jane Melin
 ♣Jayme Merrick
 ♣Brian Merritt
 *****Megan Miller, D.O.
 ♣Michelle L. Miller
 ♣Patience Miller
 ♣Rachelle Miller
 ***Sheila M. Miller
 ♣Linda Minot
 ♣Eli Misel
 *****Mark Mitchell, M.D.
 ♣Nancy Mitton
 ♣Pamela Molden
 *****Robert Montagnese
 ♣Amy Moore
 ♣Keri Moore
 ♣♣Marsha Moore
 ♣Patricia Moore
 ♣Michele Moran
 ♣Amanda Morgan
 ♣Lindsey Moriarty
 ♣♣♣Misty Morrison
 *****Ghulam Mujtaba
 ♣♣Dr. D'Anna Mullins
 *****Jill Nicholson, M.D.
 ♣Jillian Nixon
 *****Jeannine Nock
 *****Peter Nock, D.O.
 ♣Judith Nolette
 ♣Melonie Norris
 ♣♣Elizabeth Nye
 ♣Melissa O'Donnell

♣Randy Oliverio
 ♣♣Janelle Osborn
 ♣Rebecca Osborn
 ♣Brock Owens
 ♣Patricia Owens
 *****Eric Pacht, M.D.
 ♣Neil Pancoast
 *****KW Tim Park, M.D.
 ♣Aundrea Parker
 ♣Joshua Parker
 *****Kenneth Parker, M.D.
 ♣Patricia Parker
 ♣Carrie Patterson
 ♣♣Lisa Patterson
 ♣Isabel Paulson
 ♣Drisa Paynter
 ♣Nathan Paynter
 ♣♣Michelle Pease
 ♣April Peters
 *****Anne Peterson
 ♣Kelly Pethtel
 ♣Michael Pethtel
 ♣Gary Pettit
 Marsha Pfeifer
 ♣Kristan Phelps
 ♣♣Lorie Phillips
 ♣Staci Pierce
 ♣Kathleen Pitchford
 ♣Rozella Pollock
 ♣Cynthia Poth
 ♣Frances Pound
 ♣Stacey Powell
 ♣♣Douglas Predmore
 ♣Adam Price
 ♣♣Krista Price-Brooks
 ♣Amy Priest
 ♣♣Christina Priest
 ♣Traci Priest
 ♣Annette Prince
 ♣♣Kenneth Quick
 ♣Nancy Ransom
 ♣Lynda Ratliff
 ♣Drema Reaser
 ♣Cheryl Rechel
 ***Mary Reid
 *****Lorei Reinhard
 Debbie Rhodes
 ♣Jamie Rice
 ♣Amanda Rice
 ♣Vickey Richards
 ♣♣Karen Richardson
 ♣Pamela Richardson
 ♣Kimberly Ridgeway
 ♣Amy Ridgley
 ♣Lenore Rieder
 ♣Richard Riggelman
 ♣Ryan Riggs
 ♣Cheryl Rigsby
 ♣Charles Rine
 ♣Charles Roberts
 ♣Tina Roberts

*****May-Lee Robertson, D.O.
 ♣♣Susan Robertson
 ♣Cynthia Robinson
 ♣Cindy Robson
 ♣♣Waneta Roffey
 *****Eric Roth
 ♣Janette Rucker
 ♣Karoline Russell
 ♣♣Annita Ryan
 ♣Monnie Sager
 ♣Melanie Sain
 ♣Ashley Samson
 ♣Becky Sarbach
 ♣Teresa Satterfield
 *****Brent Savage, M.D.
 ♣♣♣Holly Savage
 ♣Heidi Sawyers
 ♣Kristy Sayre
 ♣Gayle Scarrett
 ♣Christy Schaad
 *****Laurie Schaeffer, D.O.
 ♣Jody Schirtzinger
 ♣♣Eric Schlairlert
 *****Stephen Schlicher
 ♣Judith Schmitt
 ♣Paula Schmoll
 ***Angela Schneider-Wilson
 Frances Scono
 *****Mary Jane Scott, M.D.
 ♣Patricia Seitz
 ♣Kay Sellars
 Richard Selzer
 ♣Theresa Shaffer
 ♣Donna Shaner
 ♣Roger J. Sharrock
 ♣Rhonda Shaw
 ♣♣Lyndsey Shepherd
 ♣♣Janine Shipley
 ♣Kendra Shriner
 ♣Lori Shumaker
 ♣Chad Shutts
 ♣Amanda Siddle
 Julie Siddle
 ♣Jane Simmons
 *****Richard Simon, M.D.
 ♣Teresa Sipos
 ♣Josie Skillman
 ♣♣Rose Slater
 ***Holly Slaughter
 ♣Jennifer Rice
 ♣Eve Smith
 *****Jeffrey Smith
 ♣Karla Smith
 ♣Laura Smith
 Lynne Smith
 ♣Elsie Snively
 ♣Jonathan (Trent) Snow
 ♣Steve Snow
 ♣Diana Snyder
 ♣♣Susan E. Snyder
 ♣Taylor Solari
 ♣Kelsie Spangler

♣Janie Speakman
 *****William Stallworth, M.D.
 ♣Teresa Stamper
 ♣Sandra Stark-Rapp
 ♣♣Ronda Stegman
 ♣Andrew Stein
 ♣♣Melissa Stein
 ♣♣Benjamin Steiner
 ♣Sandra Stewart
 *****Suellywn Stewart, M.D.
 ♣♣Sarah Stone
 ♣Cassandra Stonerook
 ♣Angel Stoolfire
 ♣Barbara Stough
 ♣♣♣Tynisha Strickland
 ♣Scott Stuart
 ♣Justin Sturgill
 ♣Laura Sturm
 *****David Subler, M.D.
 ♣♣Christine Sullivan
 ♣Patricia Sullivan
 ♣Nancy Summers
 ♣Vanessa Sumner
 ♣Alexis Swan
 ♣Kimberly Swartz
 ♣Jordan Swearingen
 ♣Susan Swinehart
 ♣Tracey Swisher
 ♣Abby Tabler
 ♣Brenda Taylor
 ♣Crystal Taylor
 ♣♣Annmarie Thacker
 ♣Pamala Thacker
 ♣♣Brian Thatcher
 ♣Nancy Thompson
 ♣Rebecca Thompson
 ♣♣Robert Thompson
 ♣Karen Thompson-Snipes
 ♣♣Judy Thorp
 ♣Rebecca Tichenor
 *****Katrina Timson, M.D.
 ♣Kathleen Tittle
 ♣Jane Tolliver
 ♣John Tolliver
 ♣Bonnie Tomsu
 ♣Michelle Torbert
 ♣♣♣Mary Torchia, M.D.
 ♣Andrea Tosi
 ♣Stephanie Trager
 ♣♣Timothy Tremblay
 ♣Chris Tritt
 *****Obiaghanwa Ugbona
 ♣Kasey Uhler
 ♣LuAnn Untied
 *****Latha Urs
 ♣♣Mary Vanalmsick
 ♣Rachel Vaughn
 ***Vicky L. Walbright
 ♣Susan Walker
 ♣♣♣Angela Wallace
 ***Greg Wallis
 ♣Jeremy Walpole

♣Denette Warman
 ♣Stephan Warren
 ♣Tracy Wasem
 ♣Rebecca Watkins
 ♣Lee Ann Webb
 ♣Terri Wells
 *****Cynthia Webster
 ♣Victoria Weiser
 ♣♣Vonda Welch
 ♣♣Emily Wells
 ♣Janet Wells
 ♣Deborah Werner
 ♣Jaime Wesley
 ♣♣Diane West
 ♣♣Bonnie Westmoreland
 ♣Ashley Whisner
 ♣Janine White
 ♣Jennifer White
 Joseph White
 ♣Lynda White
 ♣Harley Whittington
 ♣Amber Wicks
 ♣Patricia Wicks
 ♣Joyce Williams
 ♣♣Rusty Williams
 ♣Andria Wilson
 ♣Jennifer Wilson
 ♣Judy Wilson
 ♣Amber Winland
 ♣Keith Wire
 ♣Kara Wnoroski
 ♣Barbara Wolfe
 ♣Susan Wolfe
 ♣♣Diane Wolford
 ♣Theresa Wollenberg
 ♣♣Denise (Jo) Wood
 ♣♣Lana Woods
 ♣Steve Woolard
 ♣♣Nancy Wortman
 ♣Jodi Yarnelli
 ♣Donna Yates
 ♣♣Katrina Yates
 ♣♣Alene Yeater, M.D.
 ♣Dawn Yoder
 ♣Regan Yontz
 *****Deborah Young
 ♣Millie Young
 *****Linda Yu, D.O.
 ♣Peggy Zahrndt
 ♣Susan Zapara
 Jennifer Zeigler
 ♣Rachel Ziranski



**Licking Memorial
Health Systems**

Visit us at www.LMHealth.org

A publication of the LMHS Public Relations Department at (740) 348-1572.
Please contact the Public Relations Department to receive future mailings.