

# Our Futures Pride Survey 2013

Report to the Leadership  
August, 2013

# Pride Survey - What is it?

- Nationally recognized survey
- 128 items plus 10 additional local questions.  
Given to all students in grades 6, 8, 10, and 12
- Results available on the Our Futures website
- District results given to each district directly.  
We only have county-wide results
- Agreed-upon tool for assessment by all Licking County agencies.

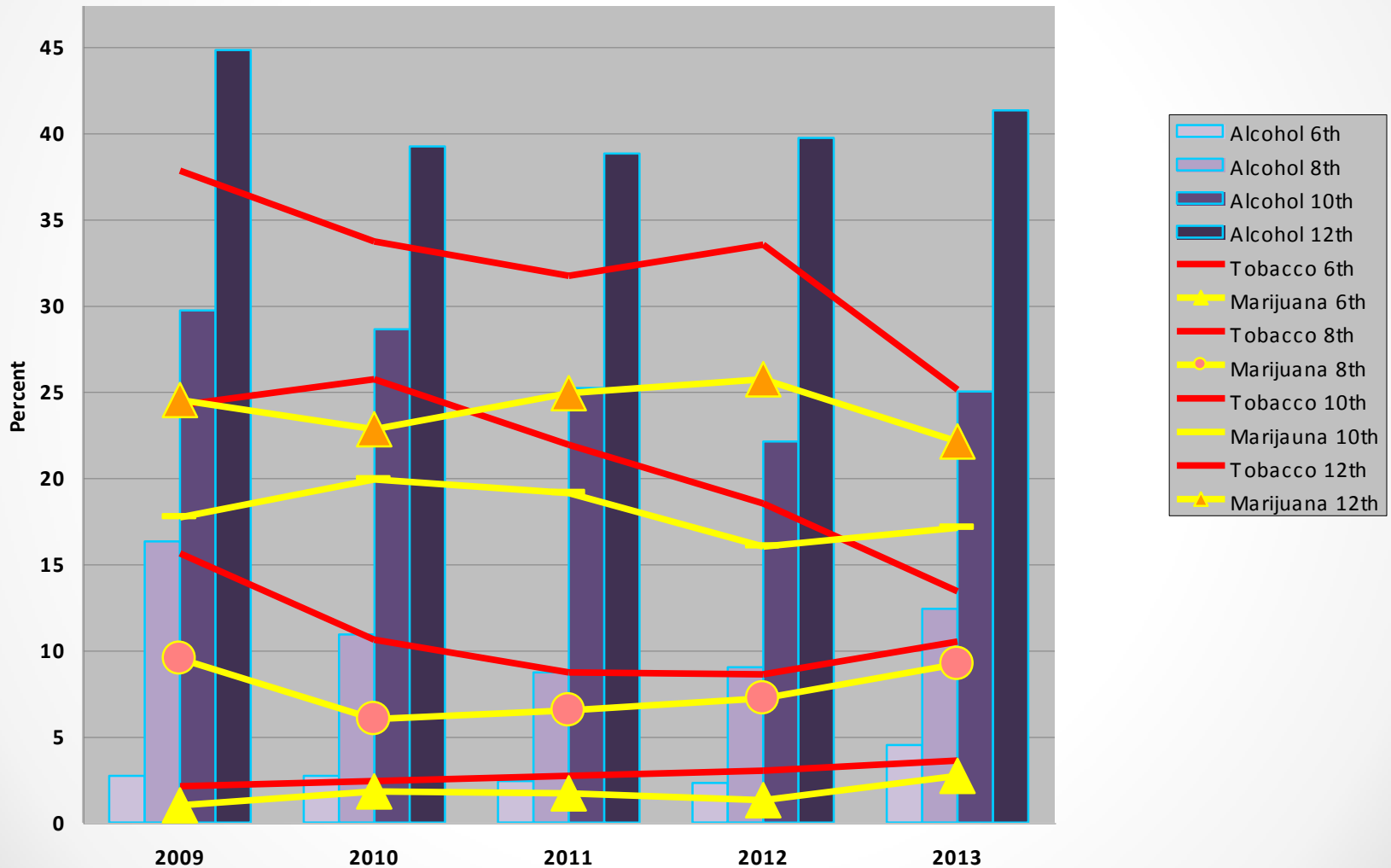
# Pride Survey - Who Participates?

<b>2008-09</b>	8 Districts: C-TEC, Granville, Heath, Lakewood, Licking Heights, Newark, North Fork, Southwest Licking
<b>2009-10</b>	Original 8 Districts plus 3 Additional Districts: Johnstown-Monroe, Licking Valley, Northridge
<b>2010-11 onward</b>	11 Districts: All public school districts in Licking County, plus C-TEC. Except that Licking Valley did not participate in 2013 and starting this year we will administer the test every two years so they will join us again in 2015.

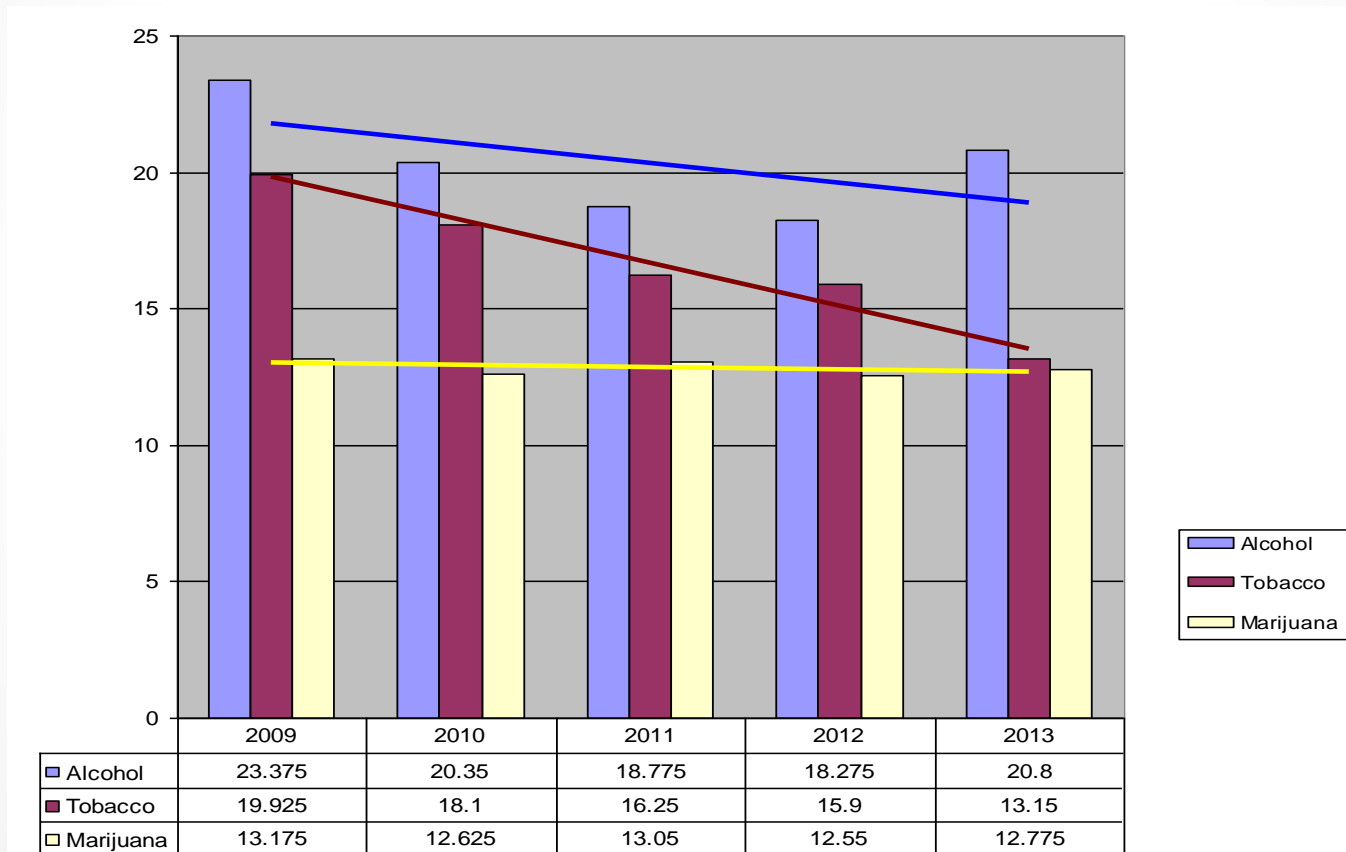
# Pride Survey - Key Findings

1. **5,639 Students were surveyed this year. (5,768 last year)**
2. **Alcohol and tobacco are still the most commonly used substances**
3. **Alcohol is highest in use, then tobacco, and then marijuana.**
4. **Tobacco use continues to decline at grades 10 and 12; and, despite some upward growth at grades 6 and 8, the trend lines for the combined average continues to go down.**
5. **Alcohol use is up this year at all 4 grade levels. Despite this, the trend line for the combined average is still downward.**
6. **A comparison with last year's National Survey shows us to be as much as 5% above the national norm for alcohol and tobacco at 12<sup>th</sup> grade. Marijuana use is above the norm at all four grades tested.**
7. **Student perception of risk for alcohol and marijuana declines as grade levels increase except for the perceived risk of tobacco use which stays high.**
8. **There is a concerning drop in the perception of risk for marijuana.**
9. **Kids are using at other places – not at school. And they're using tobacco but not alcohol in the car.**
10. **Over 60% of our students are not using anything at all grade levels since 2009.**
11. **Protective factors such as church attendance, good grades, participation in community and school activities show a relationship to non-use.**

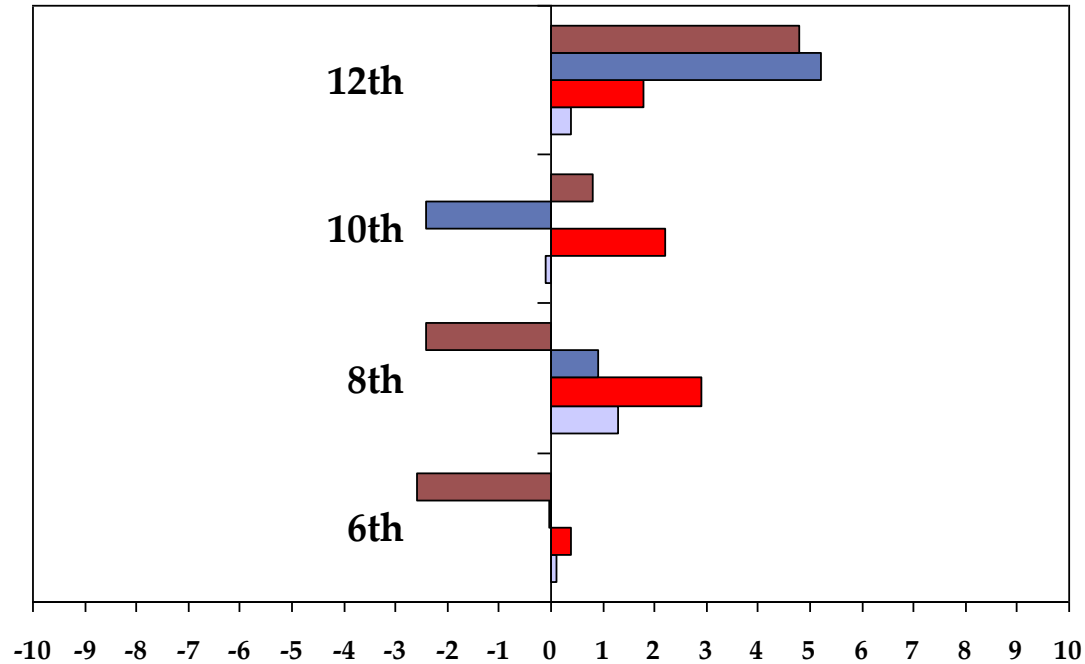
# 30 day use



# 30 day use combined average

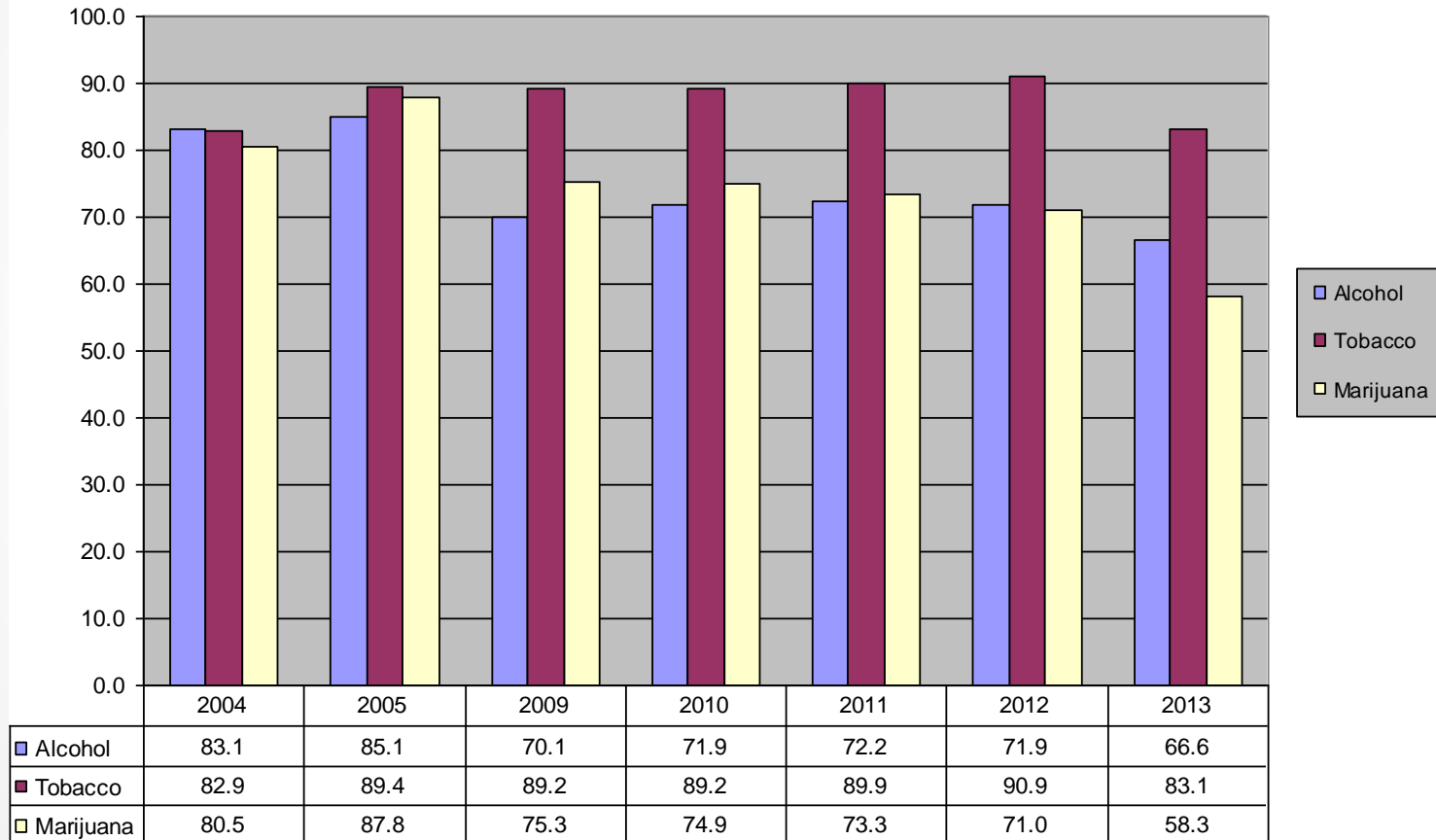


# Comparison to National Data



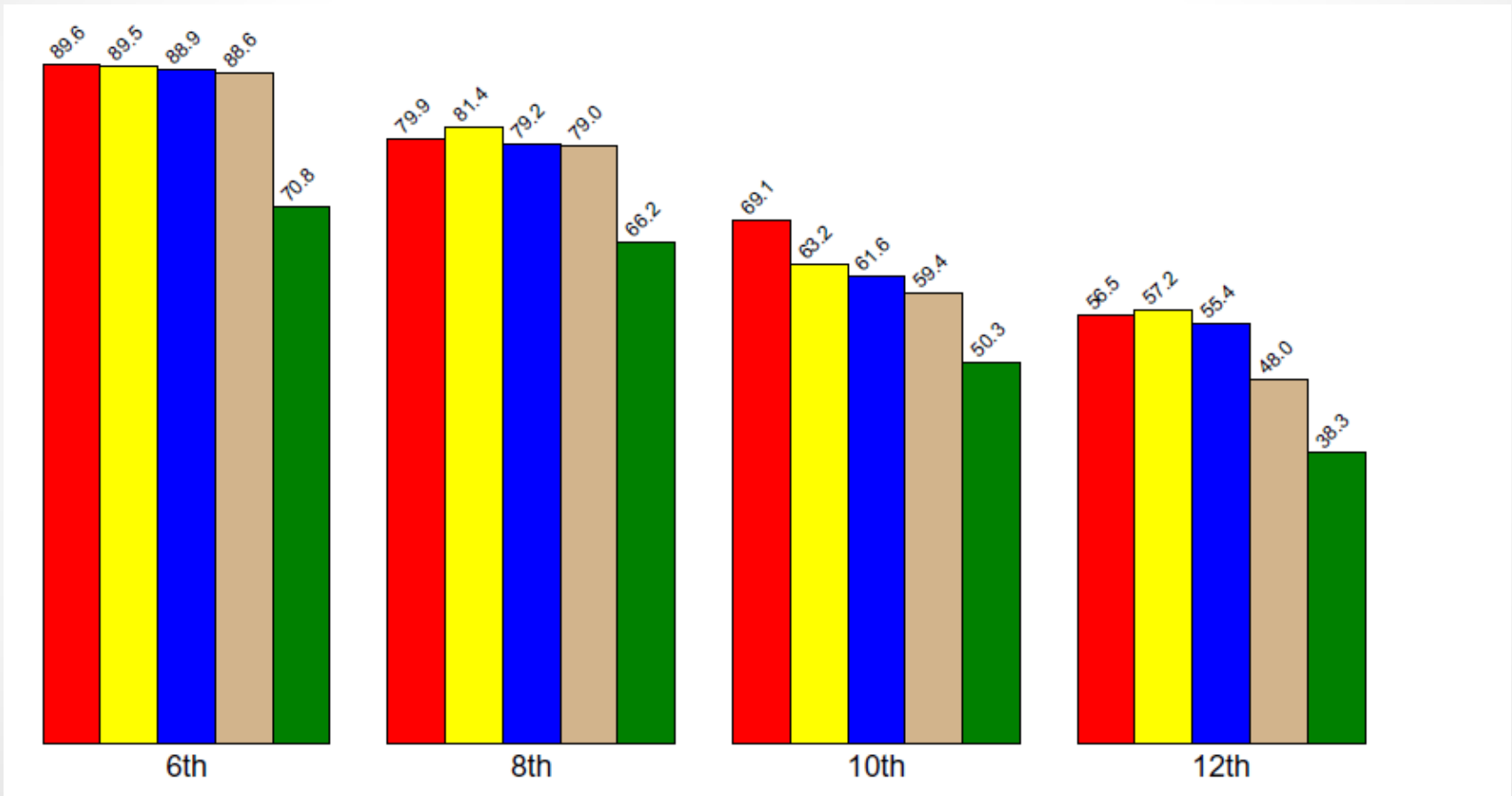
	6th	8th	10th	12th
■ Alcohol	-2.6	-2.4	0.8	4.8
■ Tobacco	-0.05	0.9	-2.4	5.2
■ Marijuana	0.4	2.9	2.2	1.8
■ Prescription Drugs	0.1	1.3	-0.1	0.4

# Perception of risk

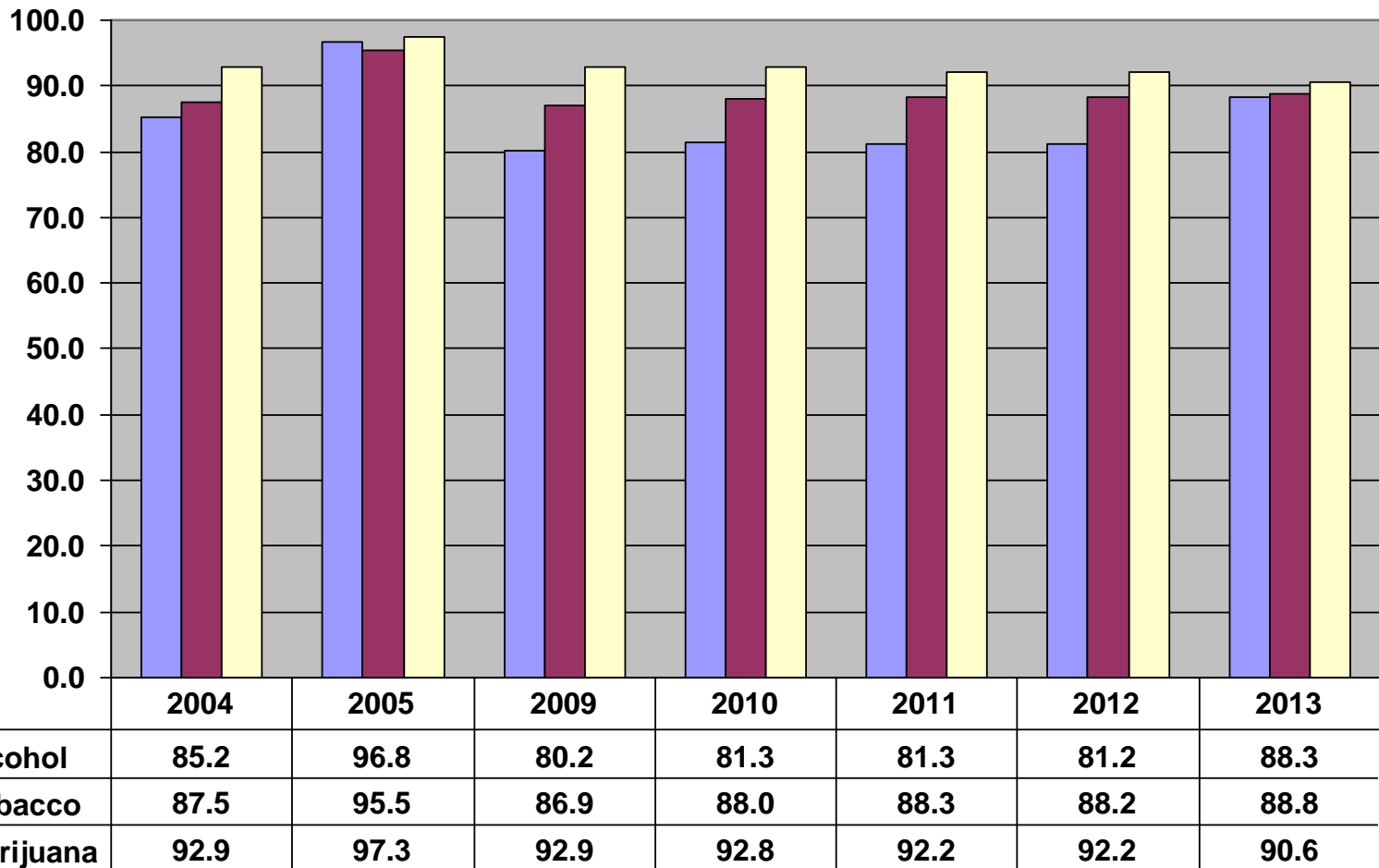




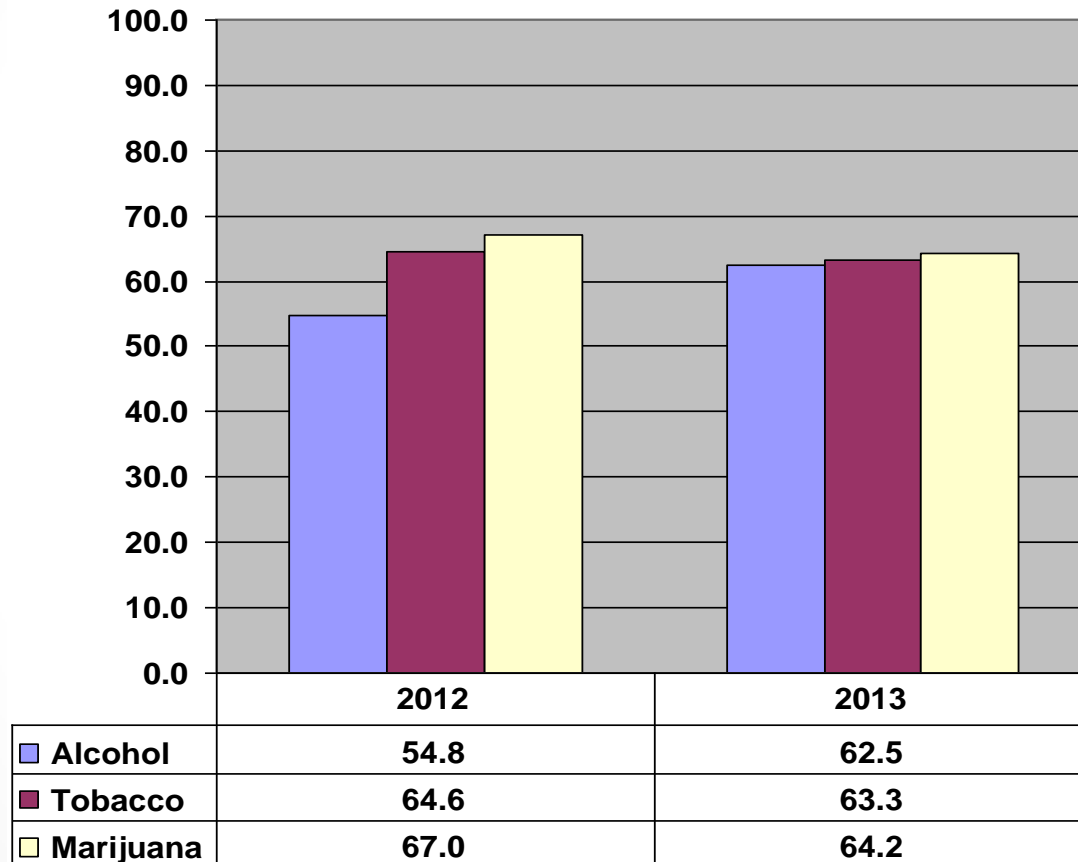
# Perceived risk of marijuana



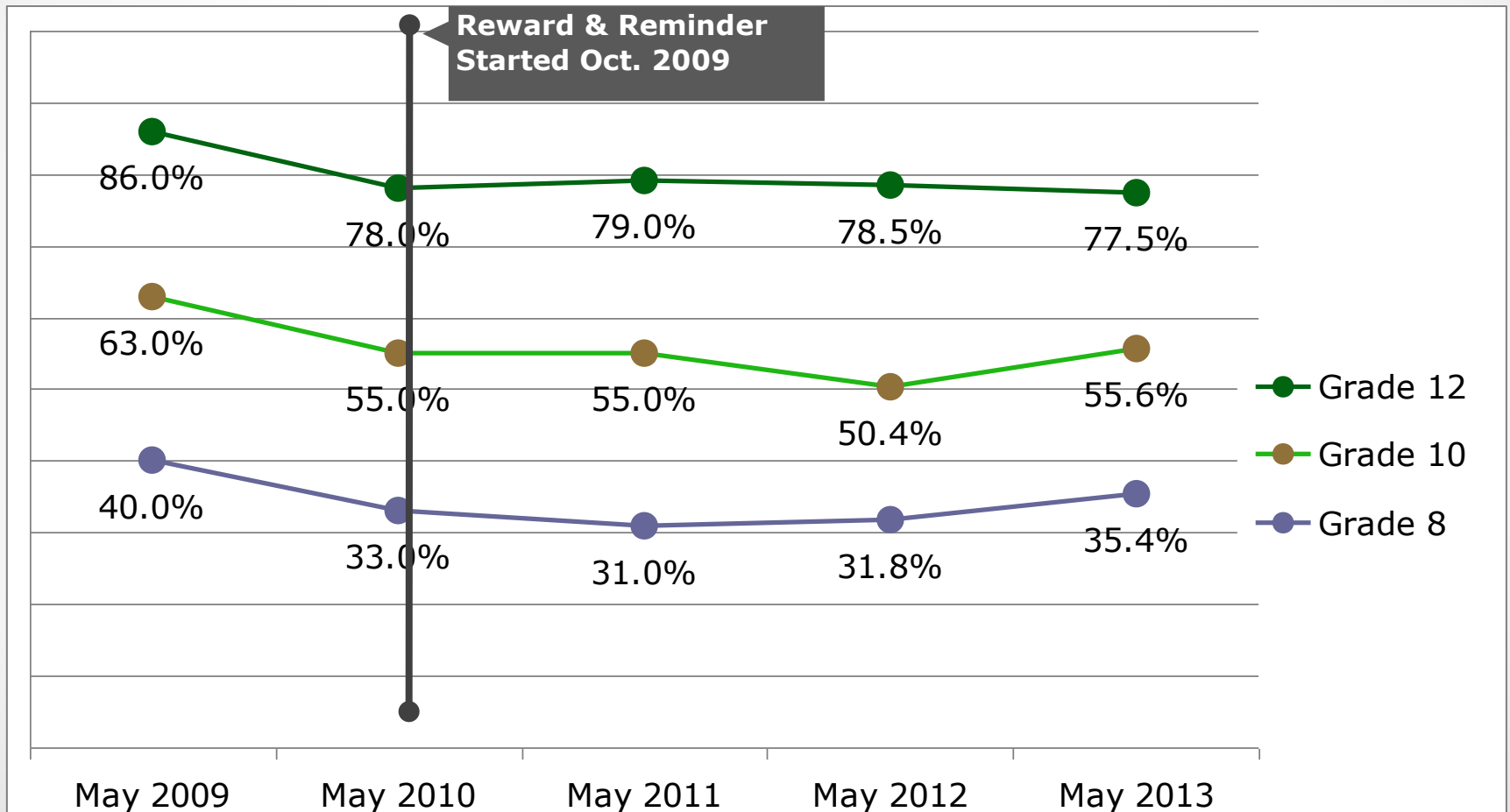
# Perception of parental disapproval



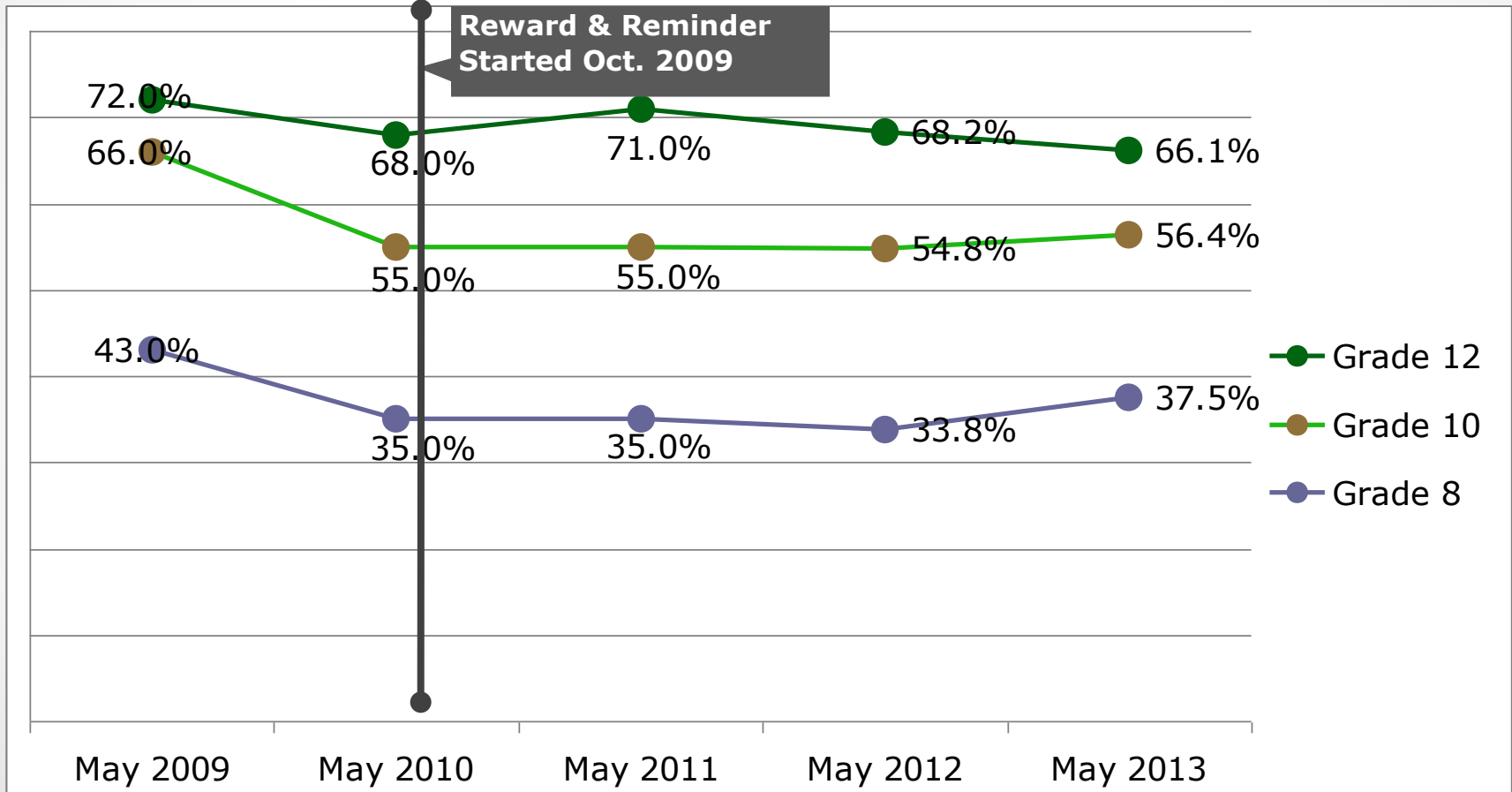
# Perception of peer disapproval



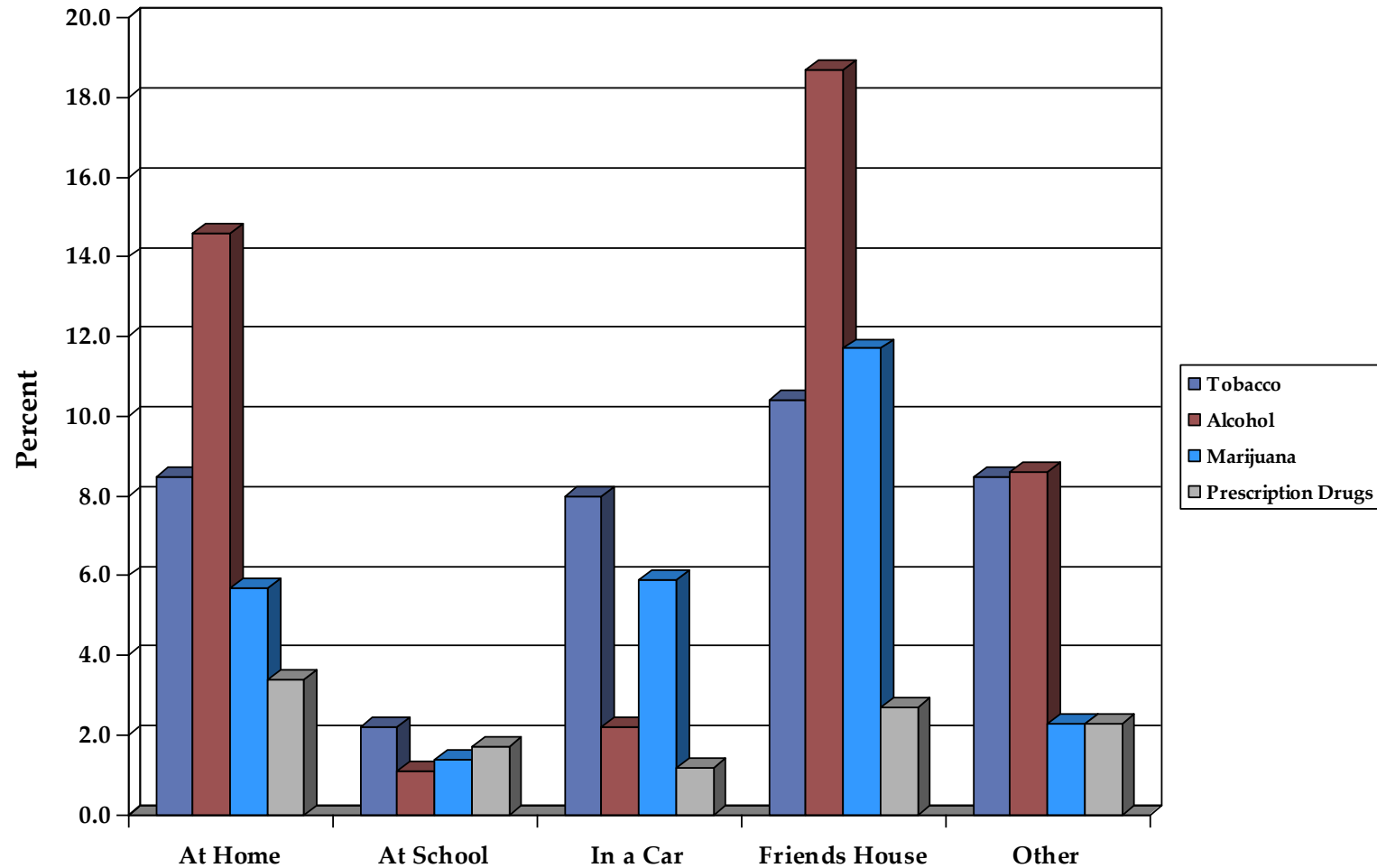
# Percent of students who say it is “fairly” or “very” easy to get tobacco



# Percent of students who say it is “fairly” or “very” easy to get alcohol



# Where are kids using?



# Other Stuff

## 2.1 Core Measures

Table 2.1: Core Measures for All Students

Measure	Cig/Tob	Alcohol	Marijuana	Presc. Drugs
Past 30 Day Use	12.0	18.7	11.7	4.5
Perceived Risk	83.1	66.7	58.3	84.3
Parental Disapproval	88.8	88.3	90.6	95.6
Friends Disapproval	63.3	62.5	64.2	79.6

## 2.2 Annual and Monthly Use

Table 2.2: Percentage of Students Who Report Using Drugs

DRUG	ANNUAL	MONTHLY
Tobacco	20.7	12.8
Cigarettes	–	12.0
Alcohol	34.7	18.7
Marijuana	18.2	11.7
Cocaine	2.6	1.5
Inhalants	3.5	2.0
Hallucinogens	3.6	1.7
Heroin	2.0	1.4
Steroids	2.4	1.5
Ecstasy	3.3	1.6
Meth	2.2	1.5
Prescription Drugs	6.7	4.5
Over-the-Counter Drugs	4.9	2.2
<b>Any Illicit Drug</b>	<b>21.0</b>	<b>13.8</b>

## 2.6 Protective Factors

Table 2.6: Percentage Of Students Protected

FACTOR	PCT PROTECTED
Make Good Grades	74.8
Attend Church or Synagogue	36.0
Take Part in Community Activities	26.7
Take Part in School Activities	37.2
Teachers Talk About the Dangers of Drugs	21.7
Parents Talk About the Dangers of Drugs	31.0

our  
**FUTURES**  
in Licking County

A stylized sun icon with a yellow circular center and red, pointed rays, positioned above the letter 'I' in the word 'FUTURES'.